



EQUITY, GROWTH, & COMMUNITY LESSONS FOR THE NEXT AMERICA

05.11.16

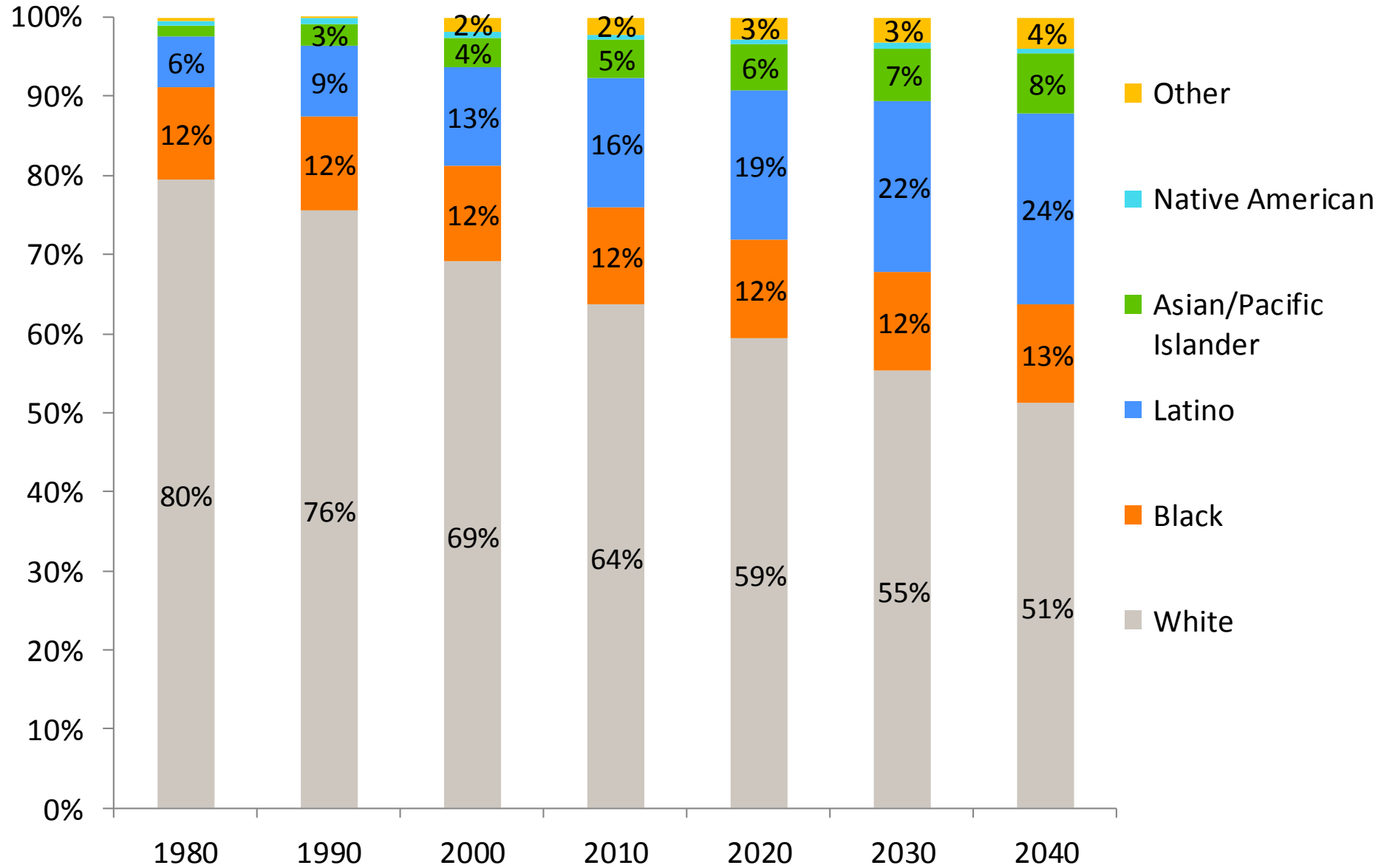
MANUEL PASTOR



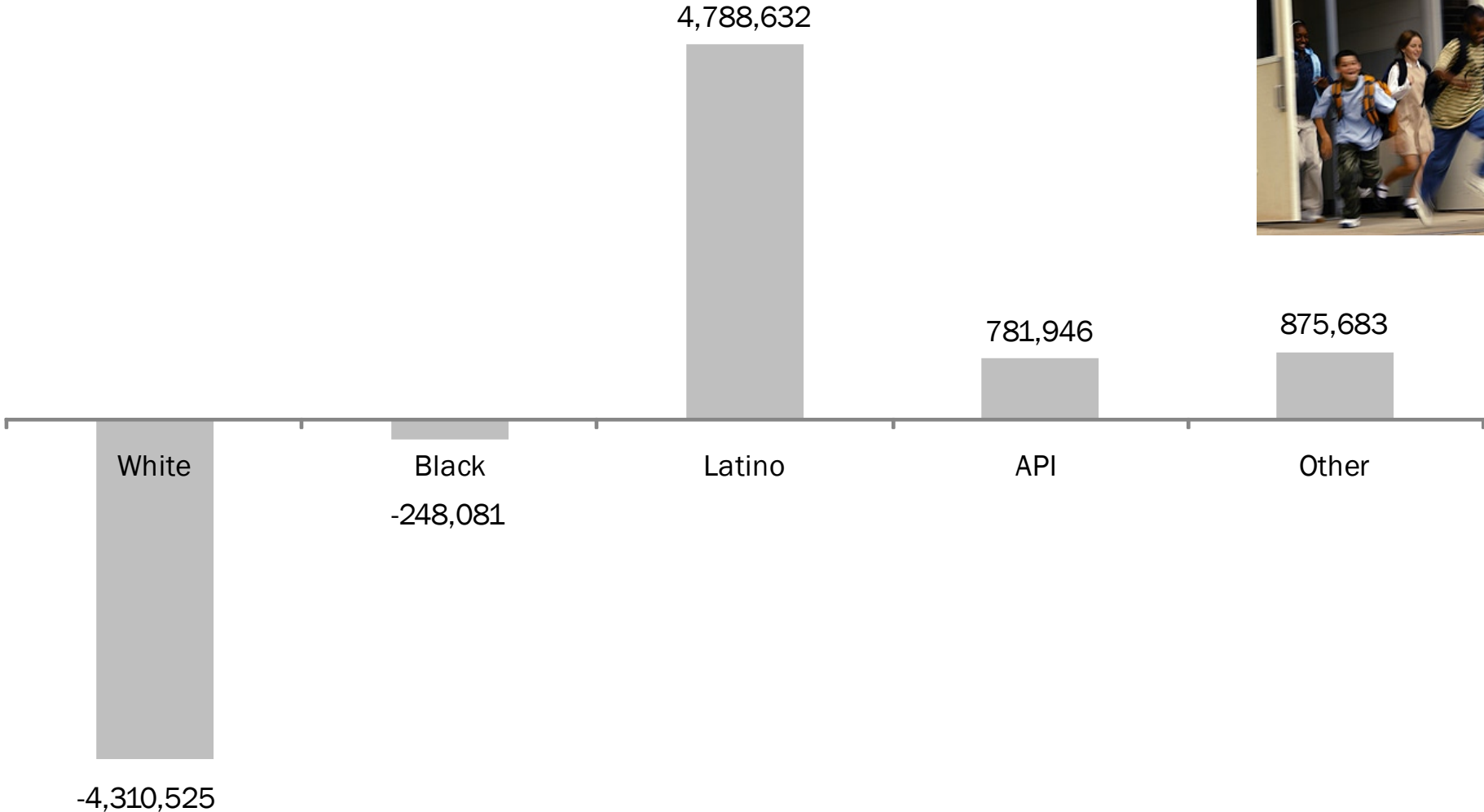
@Prof_MPastor

Changing Demographics

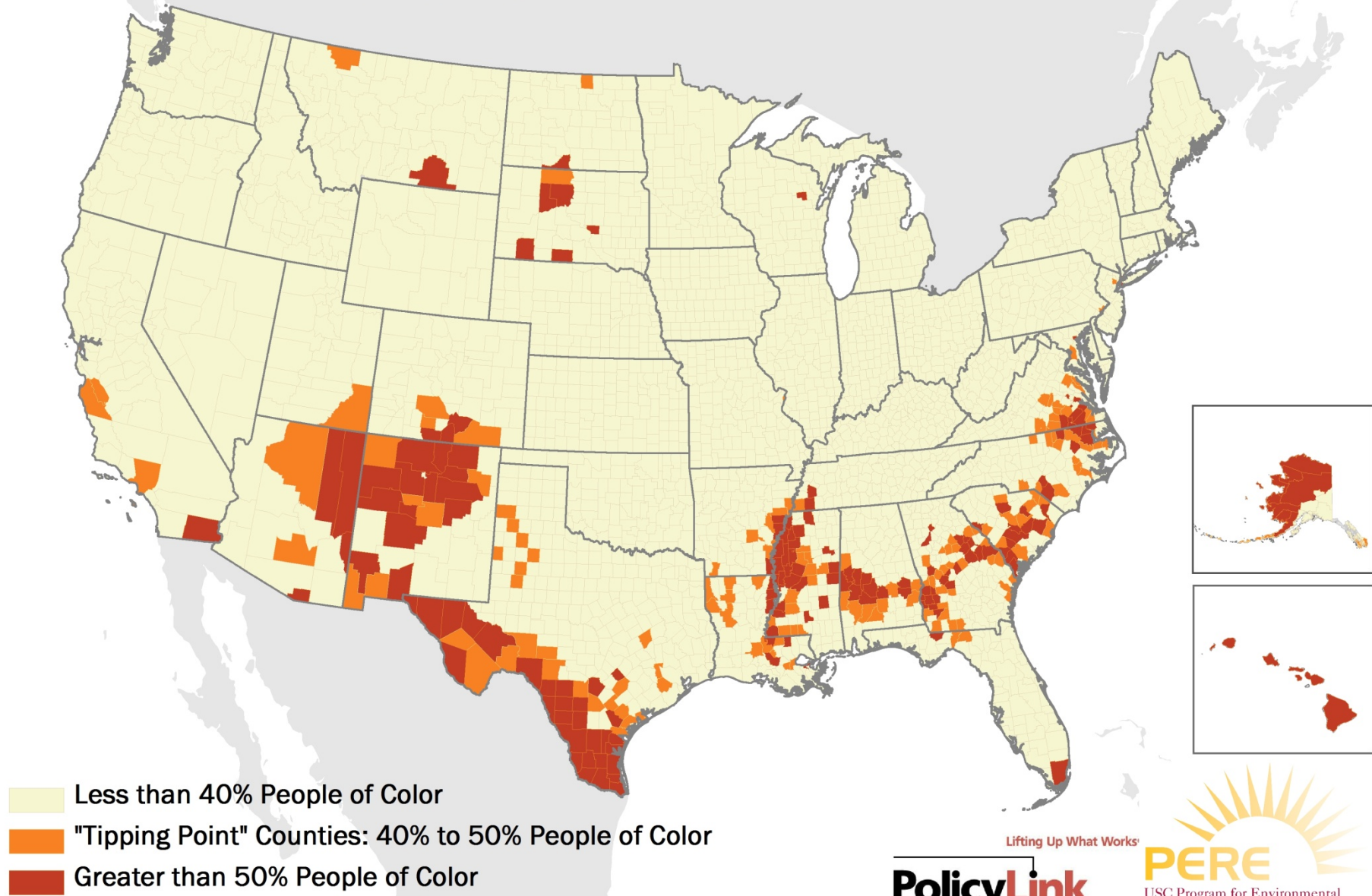
United States, 1980-2040



U.S. Change in Youth (<18) Population by Race/Ethnicity, 2000-2010

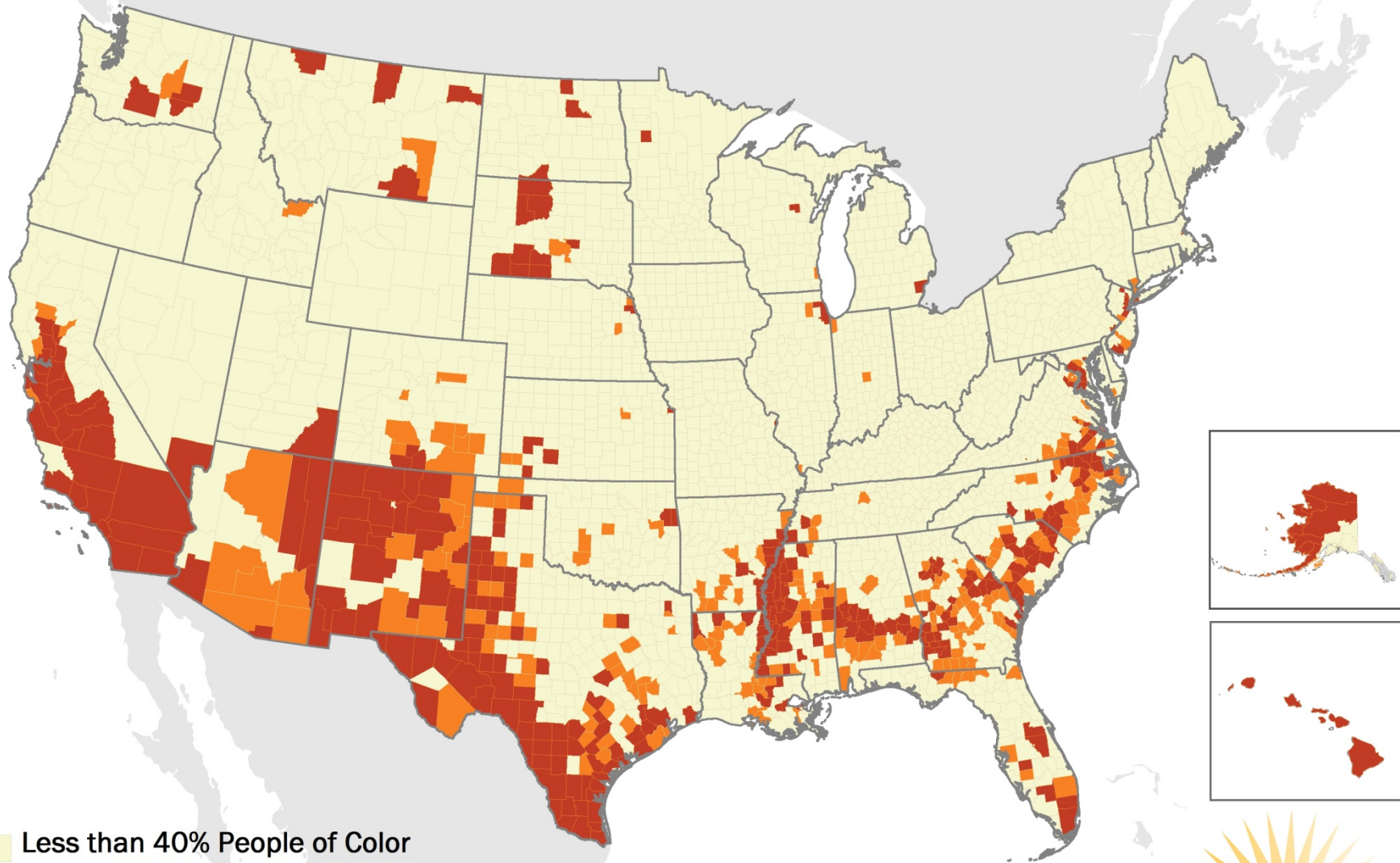


1980 Percent People of Color by County



Sources: 1980 Census, Census TIGER/Line, NHGIS, and ESRI.

2010 Percent People of Color by County



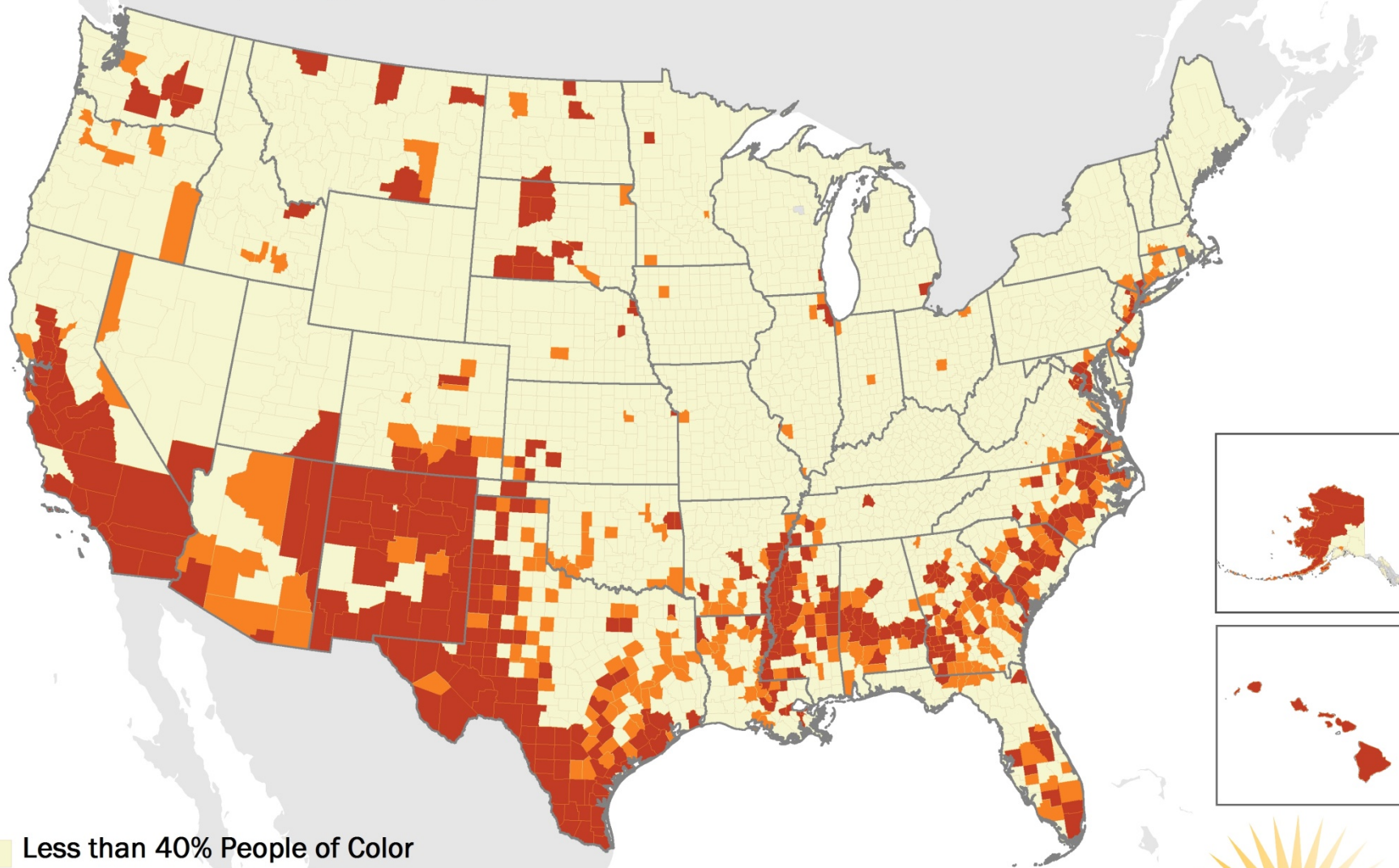
- Less than 40% People of Color
- "Tipping Point" Counties: 40% to 50% People of Color
- Greater than 50% People of Color



Sources: 2010 Census, Census TIGER/Line, NHGIS, and ESRI.



Copyright ©2011 PolicyLink and PERE

2020 Percent People of Color by County



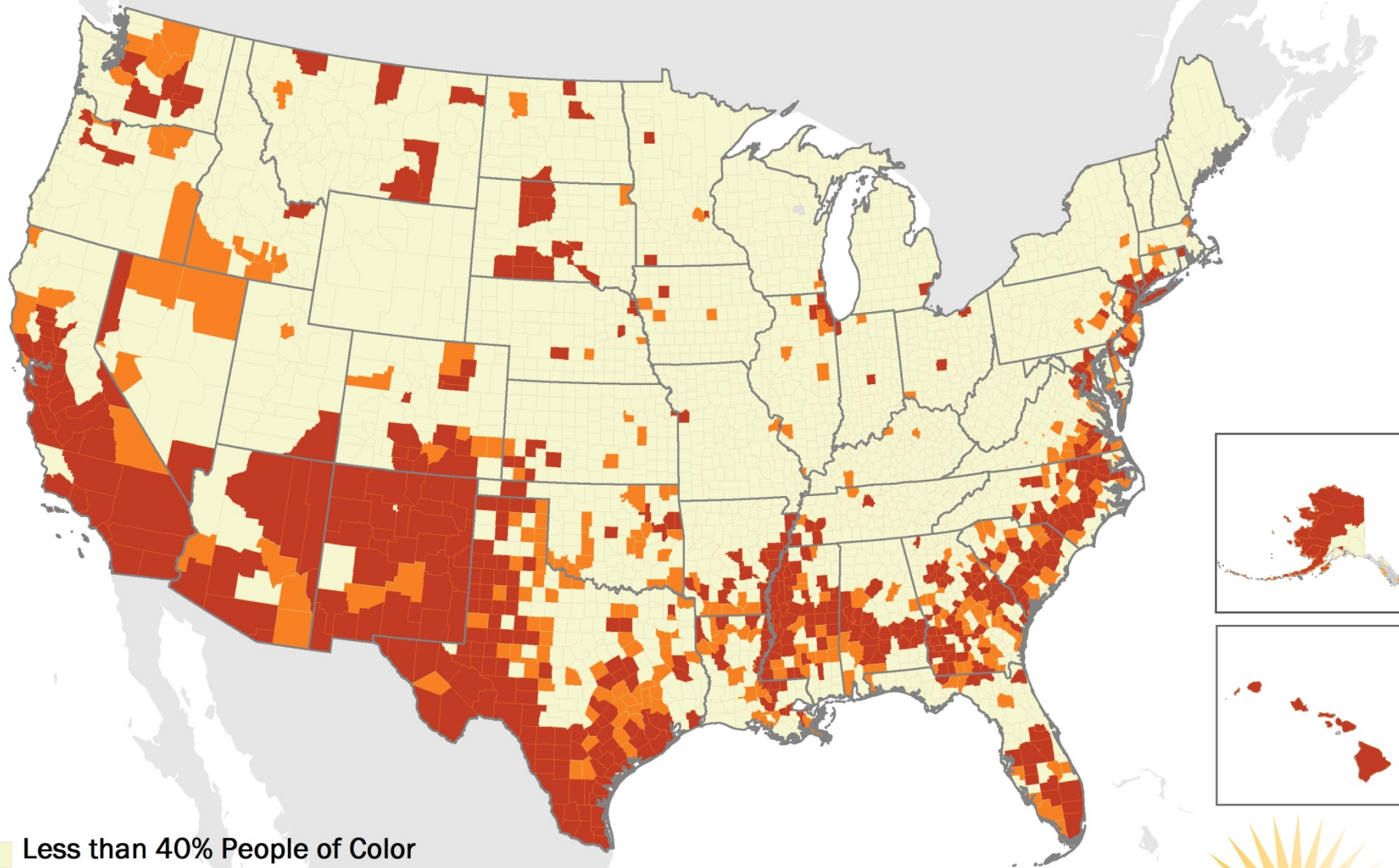
-  Less than 40% People of Color
-  "Tipping Point" Counties: 40% to 50% People of Color
-  Greater than 50% People of Color

Sources: Woods & Poole Economics projections data (adjusted using the 2010 Census), Census TIGER/Line, NHGIS, and ESRI.



Copyright ©2011 PolicyLink and PERE

2030 Percent People of Color by County



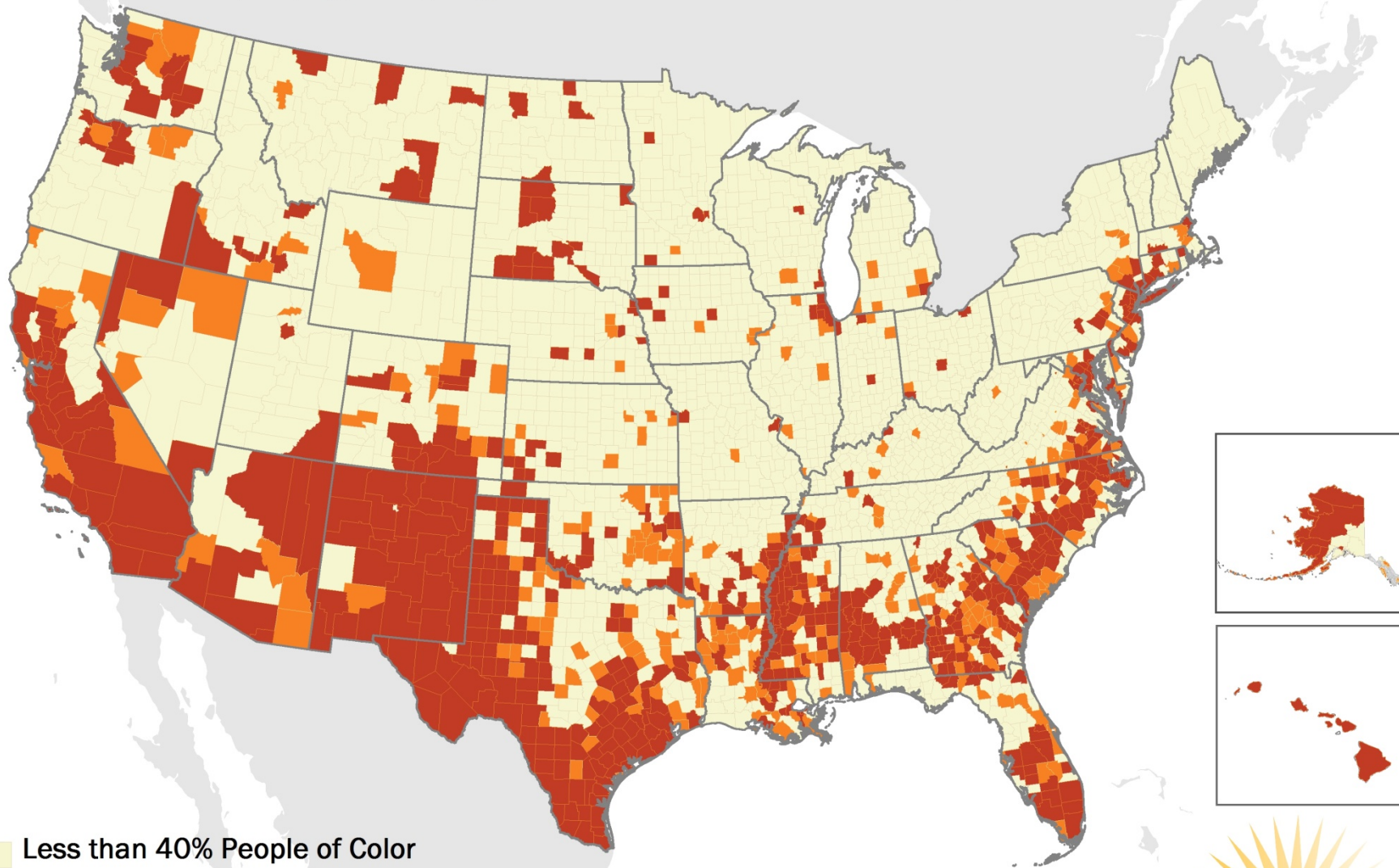
- Less than 40% People of Color
- "Tipping Point" Counties: 40% to 50% People of Color
- Greater than 50% People of Color

Sources: Woods & Poole Economics projections data (adjusted using the 2010 Census), Census TIGER/Line, NHGIS, and ESRI.



Copyright ©2011 PolicyLink and PERE

2040 Percent People of Color by County



- Less than 40% People of Color
- "Tipping Point" Counties: 40% to 50% People of Color
- Greater than 50% People of Color

Sources: Woods & Poole Economics projections data (adjusted using the 2010 Census), Census TIGER/Line, NHGIS, and ESRI.

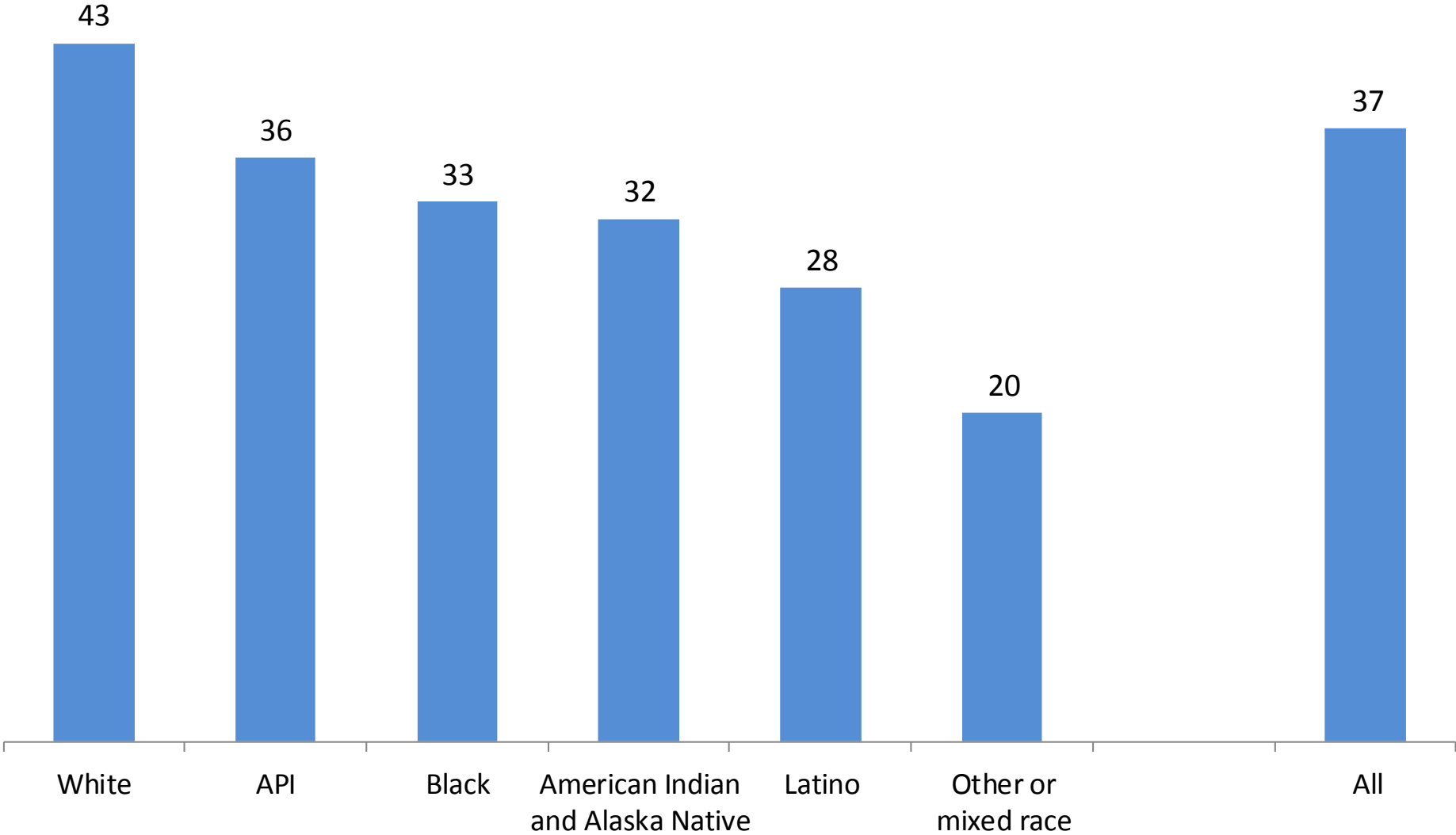


Copyright ©2011 PolicyLink and PERE

A NEW GENERATION GAP?



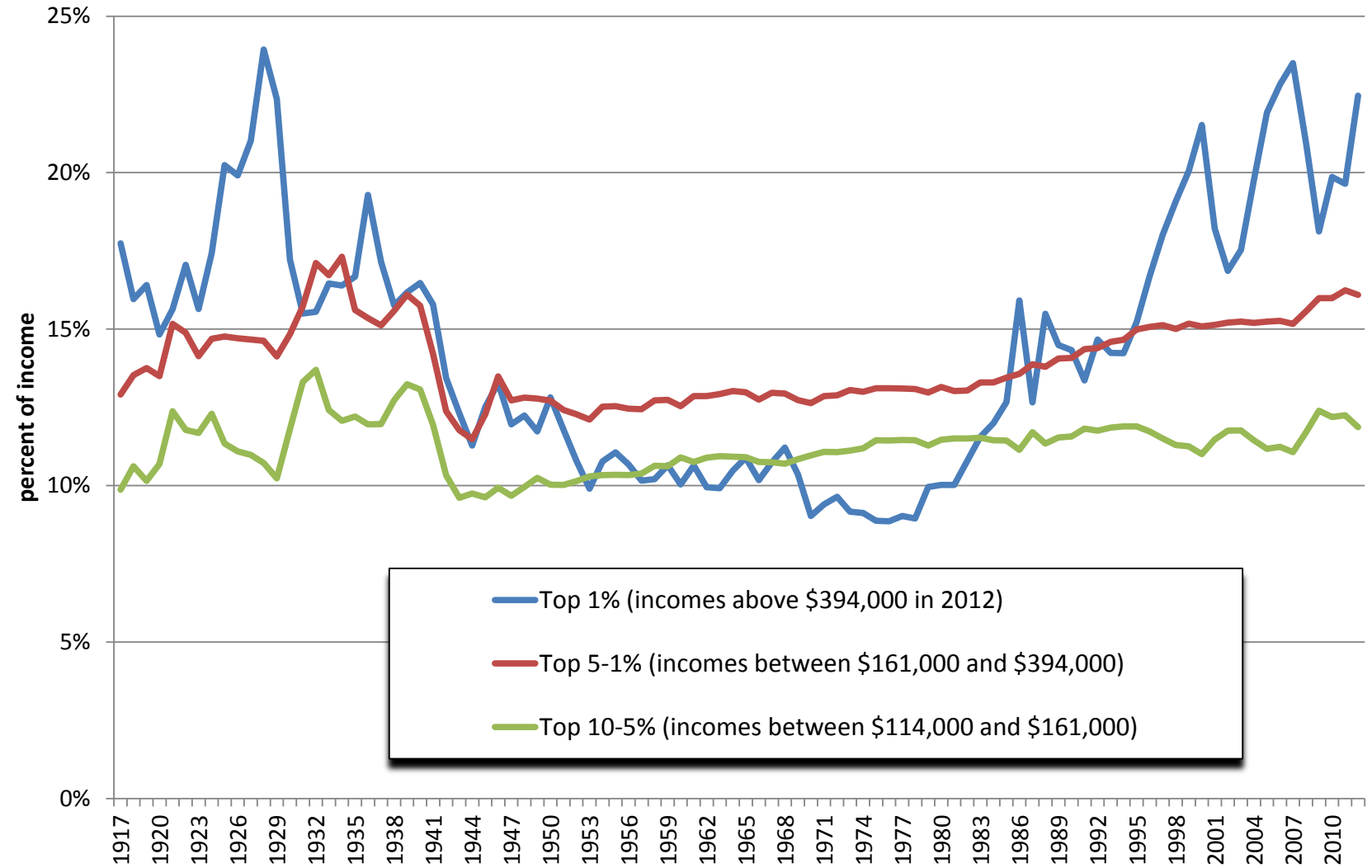
Median Age by Race/Ethnicity in U.S., 2008-2012



INEQUALITY ON THE RISE



Income Distribution in the U.S., 1917-2012

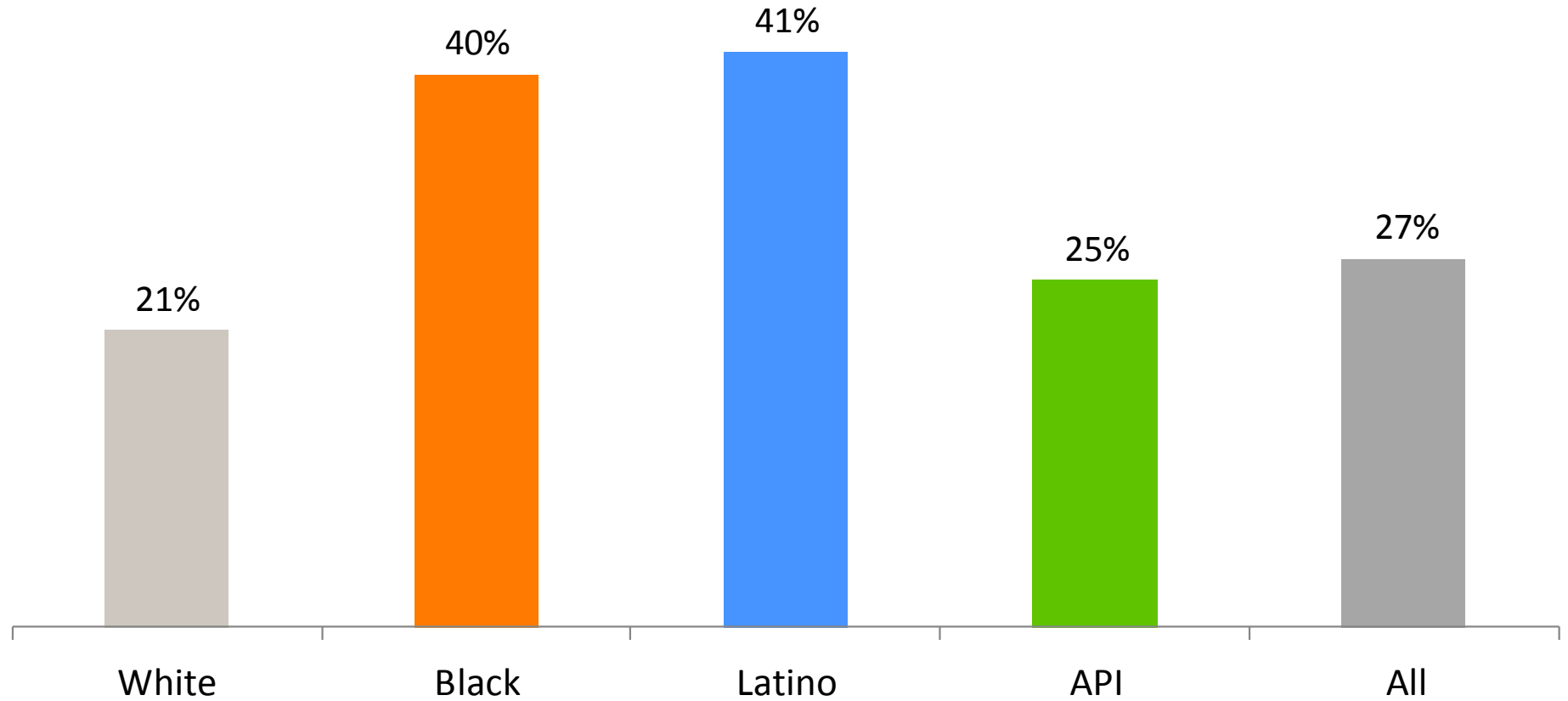


Source: Emmanuel Saez, *Striking It Richer: The Evolution of Top Incomes in the United States* (Update : September 15, 2013).

RACIAL DISPARITIES PERSISTENT



Families Below 150% Of The Poverty Level



CRITICAL TO ADDRESS

NEXT AMERICA

Percent of U.S. Population by Age Group, 1950-2060

■ Baby Boomers

MALE

1950

FEMALE

85+

75-79

50-54

25-29

0

4%

2%

0%

2%

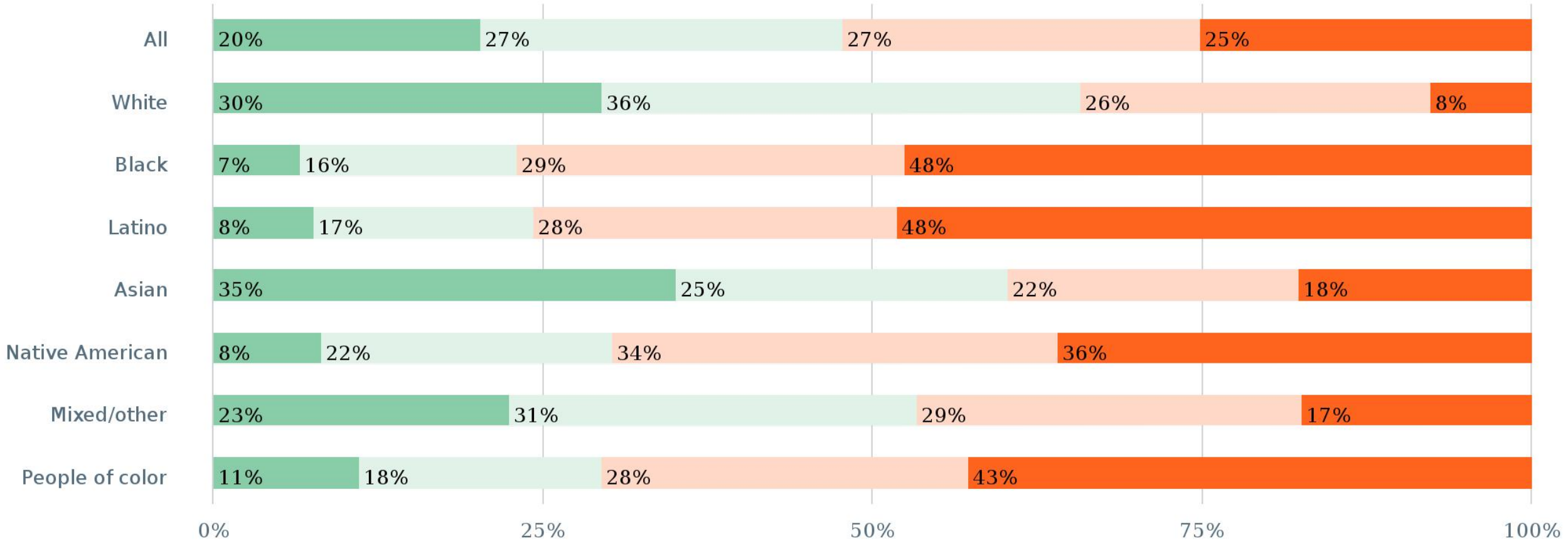
4%

PEW RESEARCH CENTER



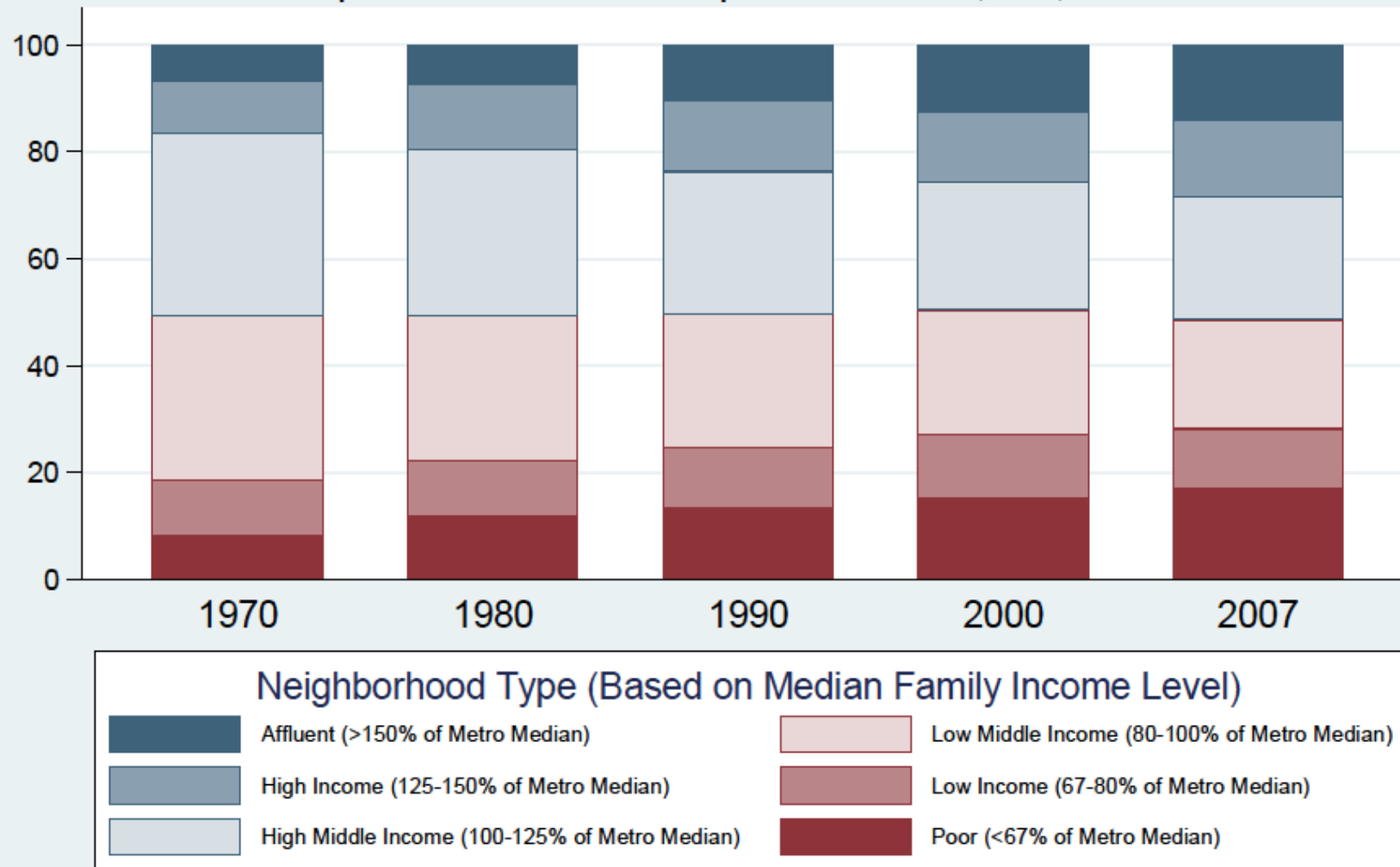
Kids of color concentrated in high-poverty schools (U.S. as a whole)

- Low (<25% of students eligible for free- or reduced-price lunch - FRPL)
- Mid-low (25-50% FRPL)
- Mid-high (50-75% FRPL)
- High (>75% FRPL)



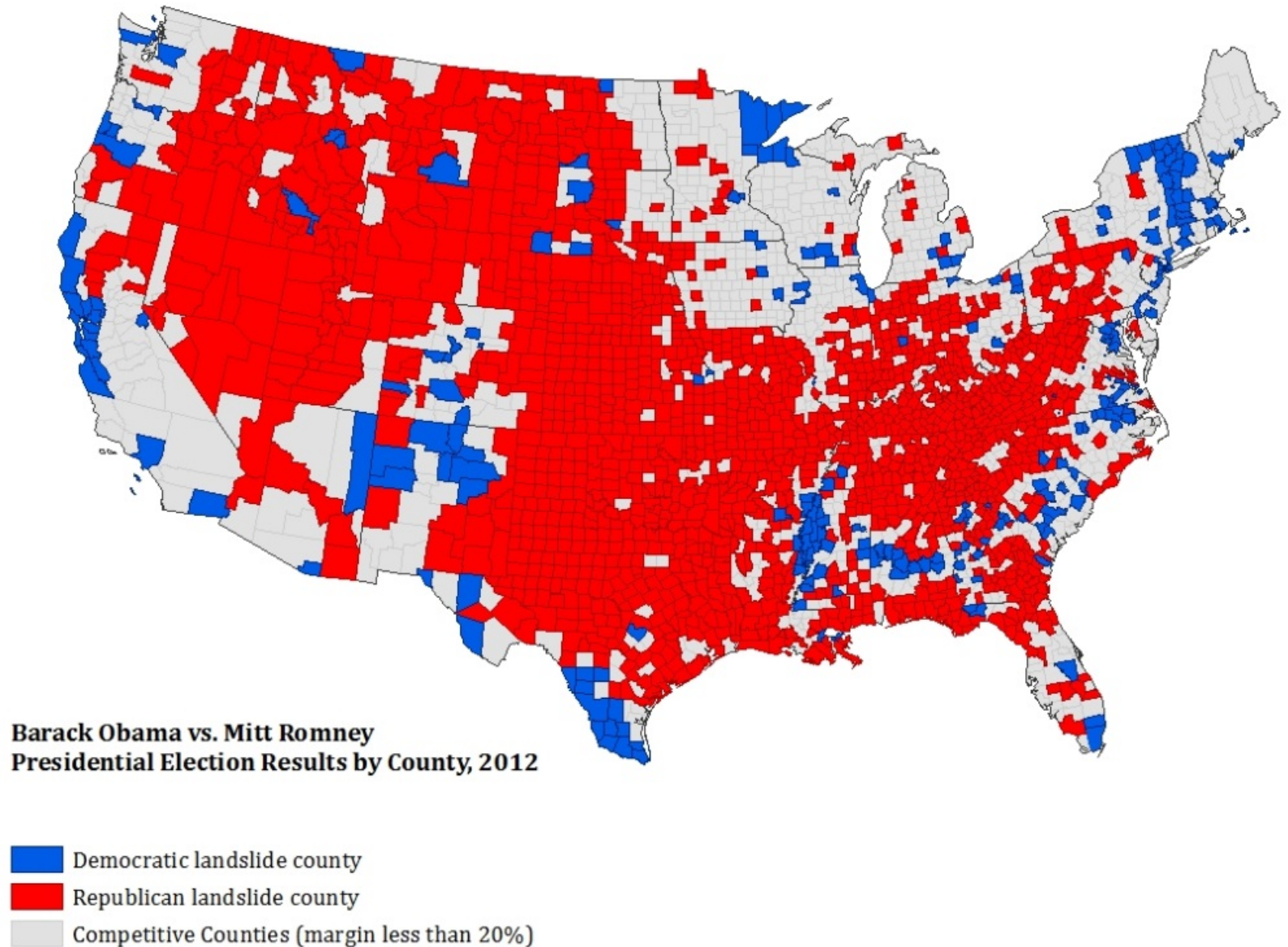
BUT WE' RE LIVING APART

Proportion of Families Living in High-, Middle-, and Low-Income Neighborhoods
Metropolitan Areas with Population > 500,000, 1970-2008



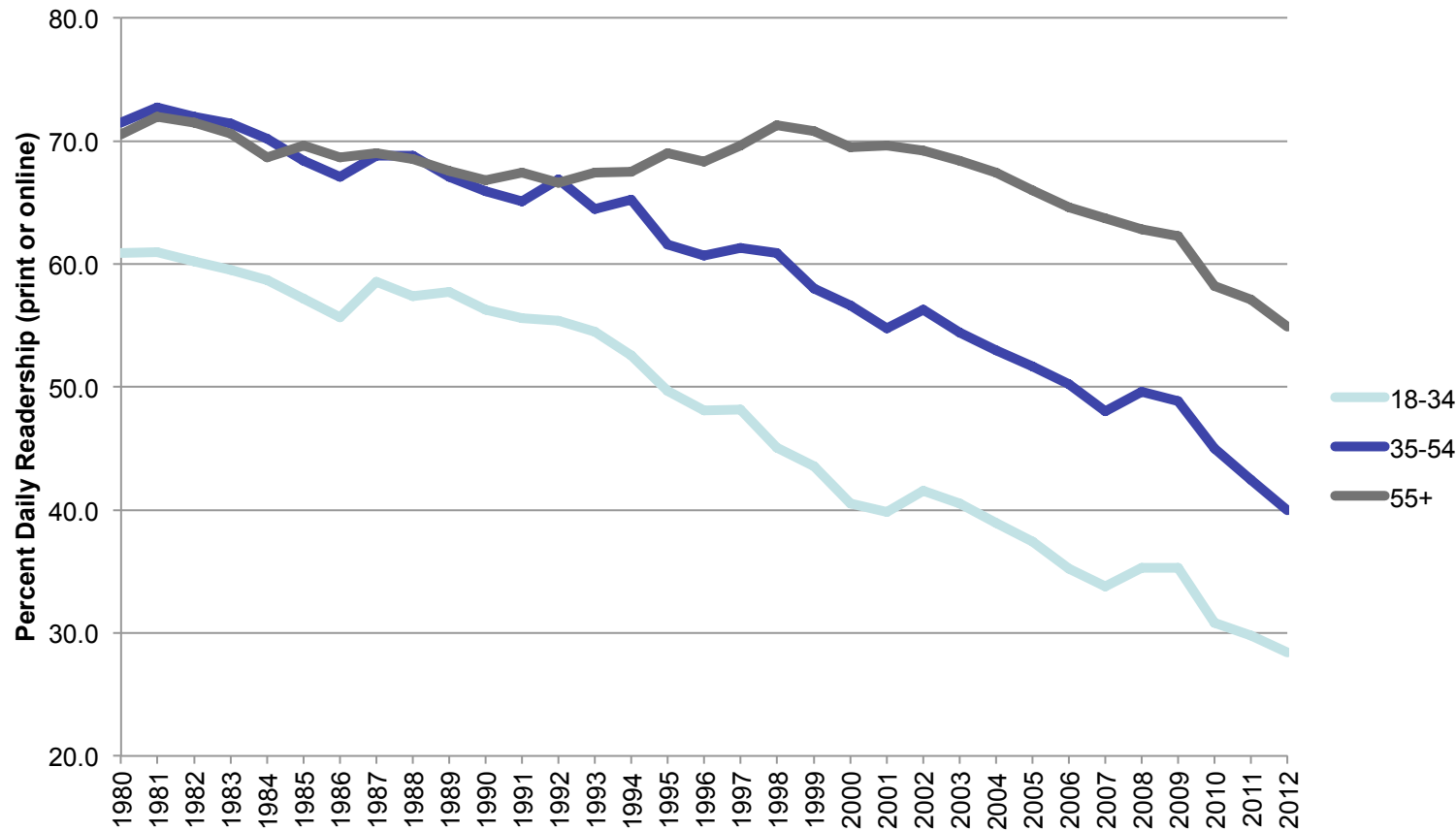
AND WE' RE VOTING APART

- In 1992, only about a quarter of voters lived in a county where a presidential candidate won by a landslide. By 2012 it was a half.



AND WE'RE KNOWING APART

Newspaper Readership by Age Group, 1980-2012



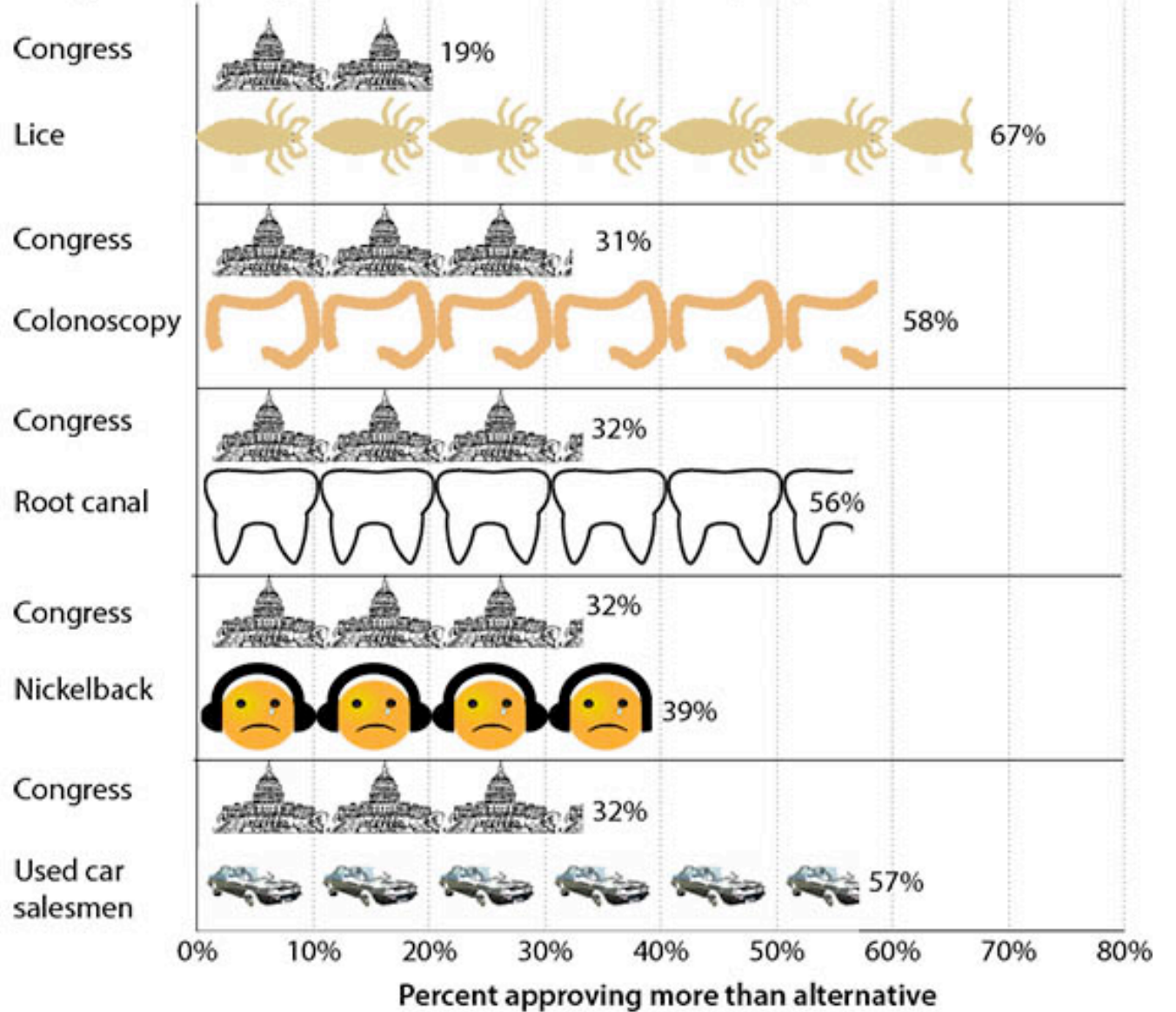
Source: Newspaper Association of America, from data by Scarborough Research



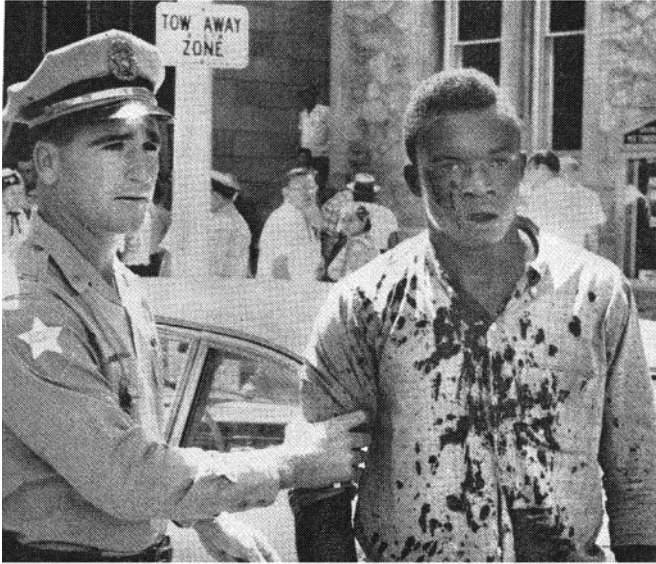
AND OUR INSTITUTIONAL FAITH IS SHAKEN



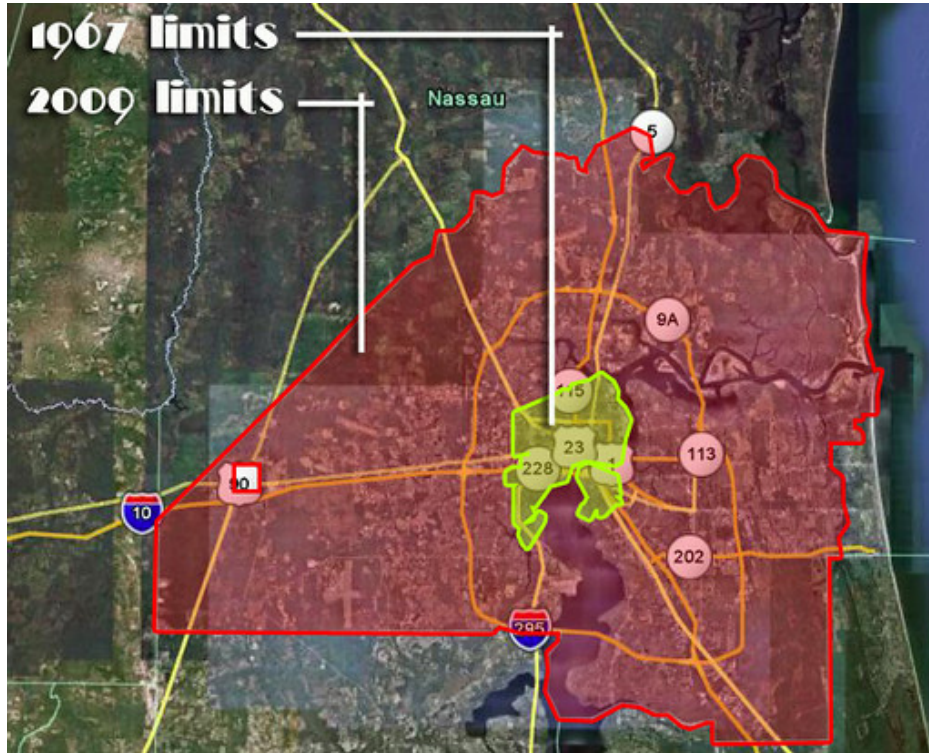
Congress is less popular than lice, colonoscopies, and Nickelback.



HOW DO WE MAKE CHANGE?



HOW DO WE MAKE CHANGE?



Biggest City In the World!

by enlarging the city to 826.5 square miles, consolidation makes Jacksonville No. 1 in area

By JIM WARD
Times Staff Writer

After a little more than four centuries, Jacksonville has finally made it.

This morning Jacksonville is not only new and hot and happy-looking.

She is not only the largest city in Florida, or in the South, or in the East, or in the United States of America or in the Western Hemisphere.

This morning, by virtue of an election held in Duval County on Aug. 4, 1967, the consolidated city of Jacksonville, Florida, is the largest city on the face of the earth.

Until the sun rose this morning at 7:28 a.m., Shanghai, China, had the largest land area of any city in the world — some 77 square miles.

All of these populations were probably set following the census in Duval County in the summer of 1961, however, when they voted to consolidate existing governments by means of better than technical, Jacksonville has a new municipal district of 826.5 square miles — more than half of the Great Wall of China.

Neither Los Angeles nor Oklahoma City, however, had claims on the world title, only the second.

Population, in its more, does not enter into the question of Jacksonville being the largest city in the world, but it will mean something in the state.

With a population of a little more than 200,000 last summer, Jacksonville was just beginning to realize she had a story to tell, one which the Communist regime gained control of the mainland, Peking had an area of some 200 square miles, including the ancient imperial capital city, which has an area of 23 square miles.

Three years after the debut of the Nationalist, the Communist government enlarged

No other large city in the world — including such gems as Shanghai, Tokyo, London, New York City, Moscow, Saigon or Paris — has a larger land area than Jacksonville.

Again, it should be noted, this does not take into account the populations of these cities; for they are the most densely populated areas in the world.

In terms of these cities themselves, they have populations in the millions; not, in terms of the metropolitan areas which surround them, those total populations are counted in terms of tens of millions of people.

Eight Largest

In terms of square miles, the next seven largest cities in the world after Jacksonville are Shanghai, Tokyo, New York, London, Berlin, Paris, and Moscow.

This order, however, is still dependent on whether the metropolitan area of the city is included or simply the area of the city proper.

Shanghai has an area of 77 square miles as an administrative district similar to Jacksonville.

London is 33 square miles of land.

The population of the metropolitan area is 11,021,000 but only 4,800 people live in the City of London itself. The estimated population of the County of London is 3,070,000 people.

The metropolitan city of Paris, which began on the Ile de la Cité in the Seine River, is essentially located in the Seine Department, which has a population of 2,000,000 people.

the West. The population of the Moscow Union, however, is estimated at more than 20 million.

The metropolitan city of Paris, which began on the Ile de la Cité in the Seine River, is essentially located in the Seine Department, which has a population of 2,000,000 people.

the cover story

Jacksonville's unique claim to fame under consolidation is explored by Times - Union Staff Writer Jim Ward, Cover photo by Roger Mullis.

Ward

London is 33 square miles of land.

The population of the metropolitan area is 11,021,000 but only 4,800 people live in the City of London itself. The estimated population of the County of London is 3,070,000 people.

The metropolitan city of Paris, which began on the Ile de la Cité in the Seine River, is essentially located in the Seine Department, which has a population of 2,000,000 people.

the West. The population of the Moscow Union, however, is estimated at more than 20 million.

The metropolitan city of Paris, which began on the Ile de la Cité in the Seine River, is essentially located in the Seine Department, which has a population of 2,000,000 people.

Jacksonville-as far as eye can see; this aerial shows the heart of the New City with its

JCCI

Citizens Building a Better Community

JACKSONVILLE COMMUNITY COUNCIL INC.

EQUITY, GROWTH, AND COMMUNITY

Equity is a fundamental building block for achieving economic **prosperity**.

Knowing together creates a higher possibility of **growing together**.

Conflict is an important part – and not antithetical – to **collaboration**.

EQUITY, GROWTH, and COMMUNITY

What the Nation Can Learn
From America's Metro Areas



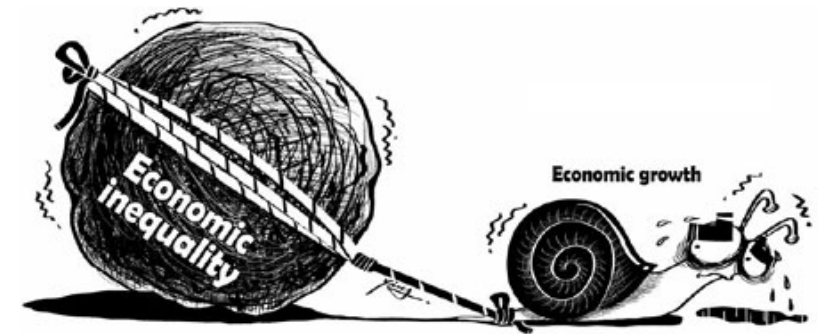
CHRIS BENNER | MANUEL PASTOR

EQUITY AND GROWTH

Conventional wisdom in economics says there is a **trade-off** between **equity** and **efficiency**.

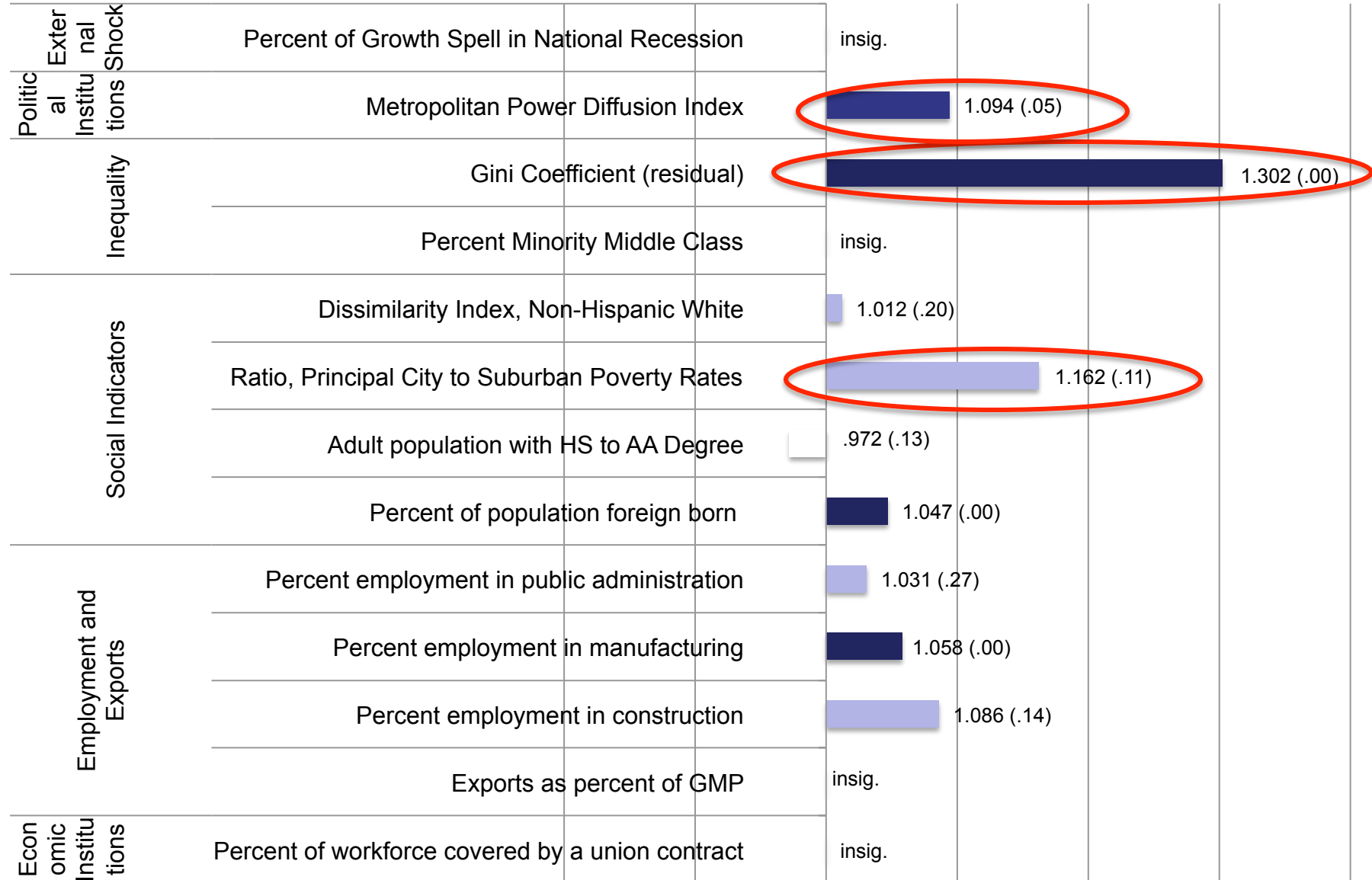
But our research suggests that regions that work **toward equity** have **stronger** and **more resilient** economic growth.

Using **model** from **IMF**, we look at factors that predict **length of employment growth** for 200 metros, 1980-2010.



EQUITY AND GROWTH

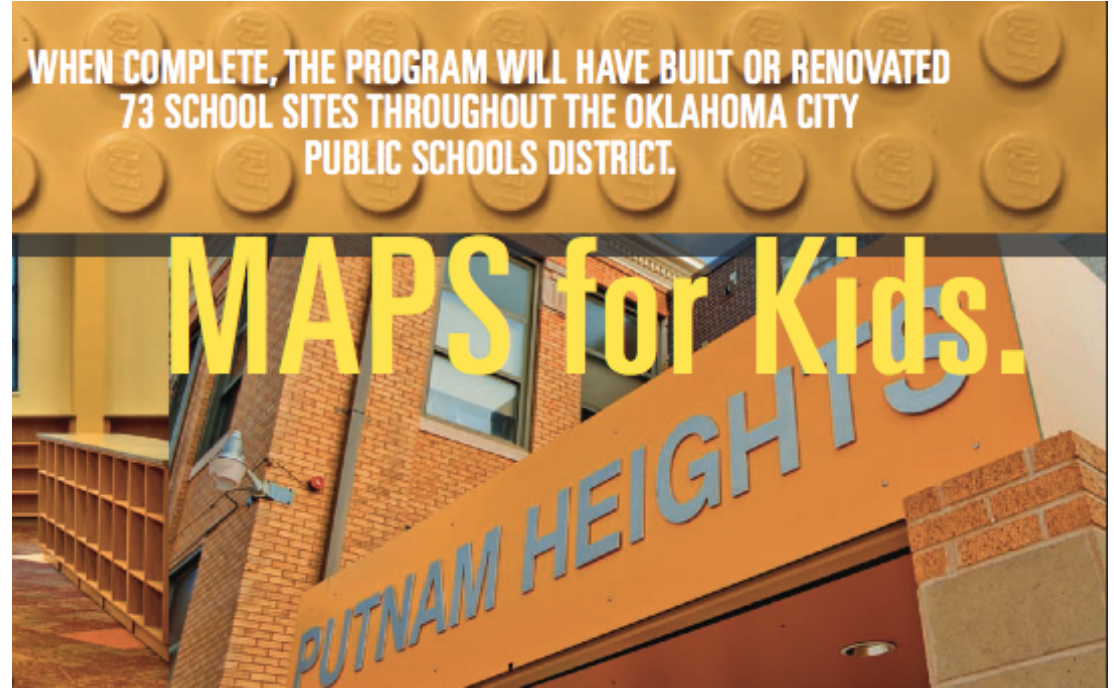
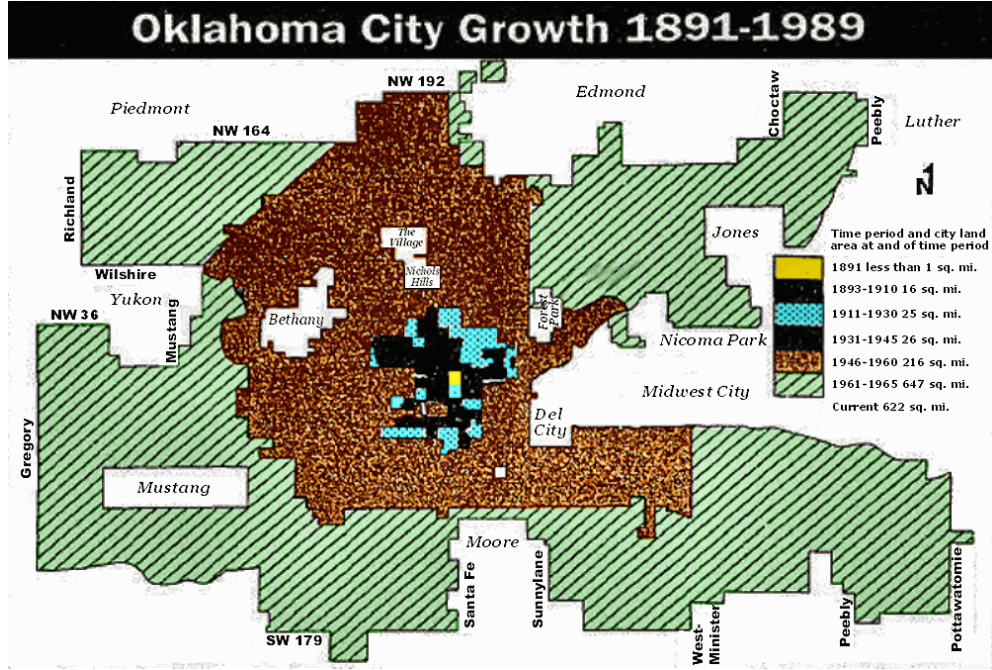
Likelihood
of Ending
Growth
Spell,
1990-2011



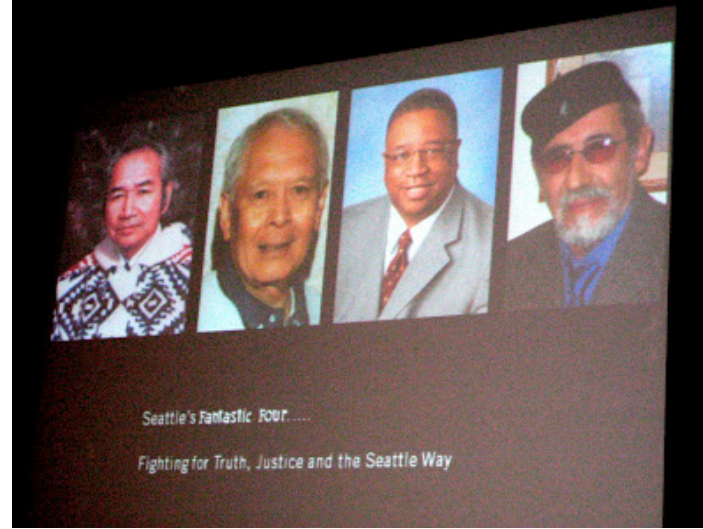
KNOWING TOGETHER



KNOWING TOGETHER



KNOWING TOGETHER



\$15 MINIMUM WAGE



Seattle process

seattle.gov

BUSINESS IN SEATTLE LIVING IN SEATTLE VISITING SEATTLE CITY SERVICES CITY DEPARTM

RACE AND SOCIAL JUSTICE INITIATIVE (RSJI)

King County Equity and Social Justice

THE NEW THREE R' S

- Sinking **Roots**
- Building **Relationships**
- Deploying **Reason**



DATA MATTERS

Data to Build an Equitable Economy

Contact Press  

National Equity Atlas



About the Atlas Data Summaries Indicators Reports Data in Action

Search 

Welcome to the National Equity Atlas, a comprehensive data resource to track, measure, and make the case for inclusive growth.

Data in Action: [Data Drives Economic Opportunity in New Orleans](#) >
Data revealing that 52 percent of black men in New Orleans are jobless led Mayor Landrieu to launch an ambitious new jobs plan.

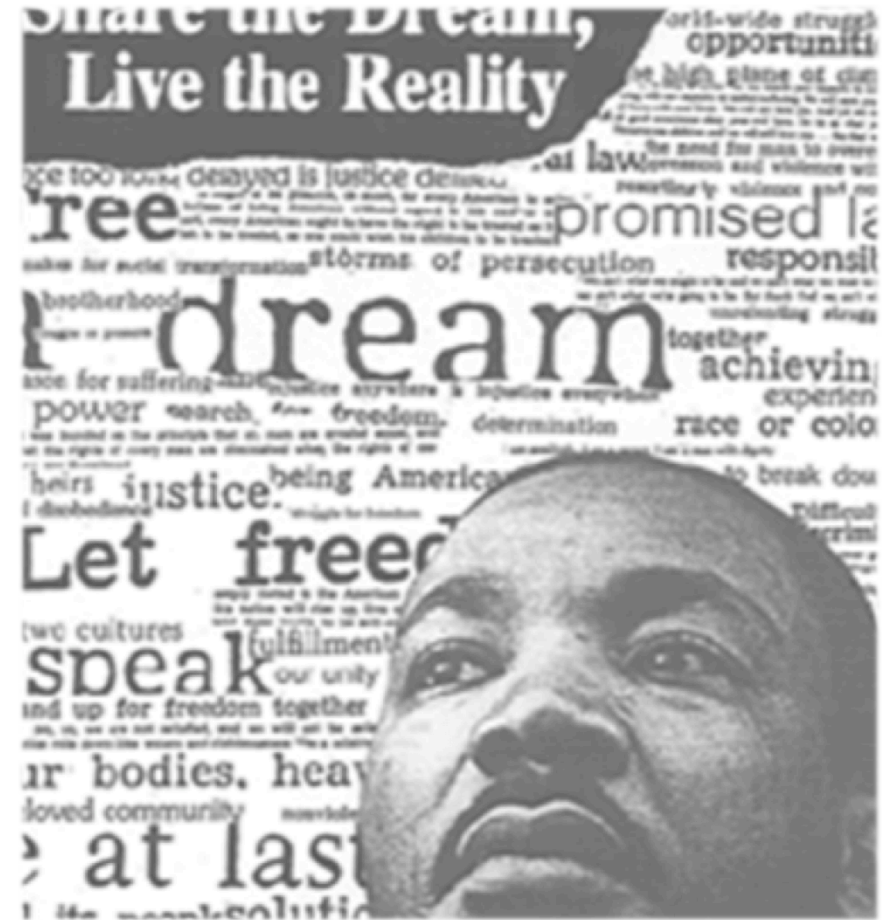


The Face of America is Changing

Begin with the U.S. Summary 

WHAT DOES THIS MEAN FOR NEW URBANISM?

- Work **across** issue areas and forge **connections**



“Martin Luther King famously proclaimed ‘I **have a dream**,’ not ‘I have an issue.’”

-Van Jones (2007)

WHAT DOES THIS MEAN FOR NEW URBANISM?

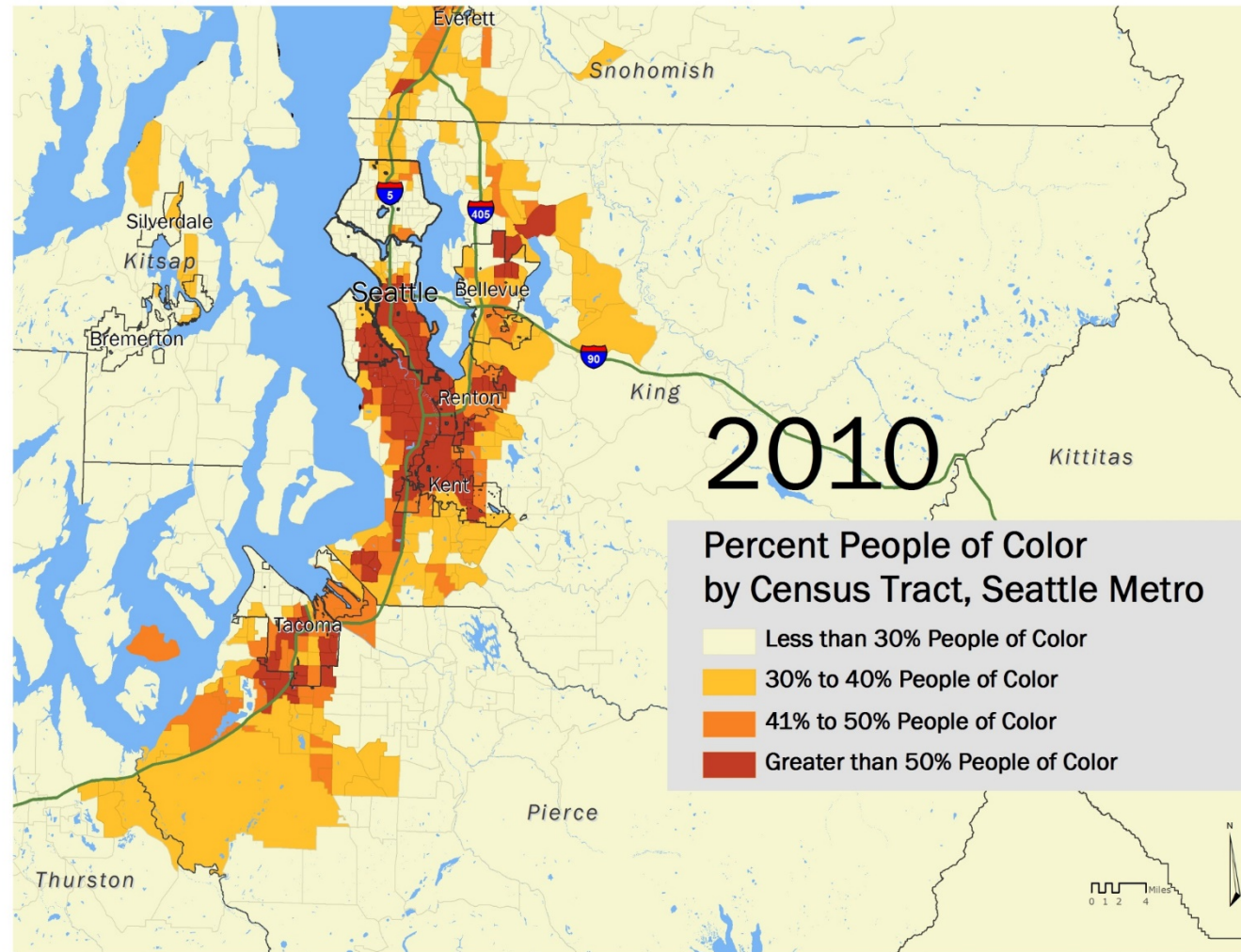
- Work **across** issue areas and forge **connections**
- Grapple seriously with the results of **success**

—○—
COMEBACK
CITY



WHAT DOES THIS MEAN FOR NEW URBANISM?

- Work **across** issue areas and forge **connections**
- Grapple seriously with the results of **success**
- Understand the **suburbs**



WHAT DOES THIS MEAN FOR NEW URBANISM?

- Work **across** issue areas and forge **connections**
- Grapple seriously with the results of **success**
- Understand the **suburbs**
- Make **equity central**: baked-in, not added on

INCLUSIVE GROWTH



FOR MORE . . .



USC Dornsife
*Program for Environmental
and Regional Equity*

USC Dornsife
*Center for the Study of
Immigrant Integration*

Also follow: [@PERE_USC](#) & [@CSII_USC](#)

