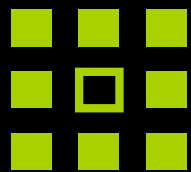


Great Streets by Design

Court Street Plaza

Richard A. Hall, P.E.

DeWayne Carver, AICP

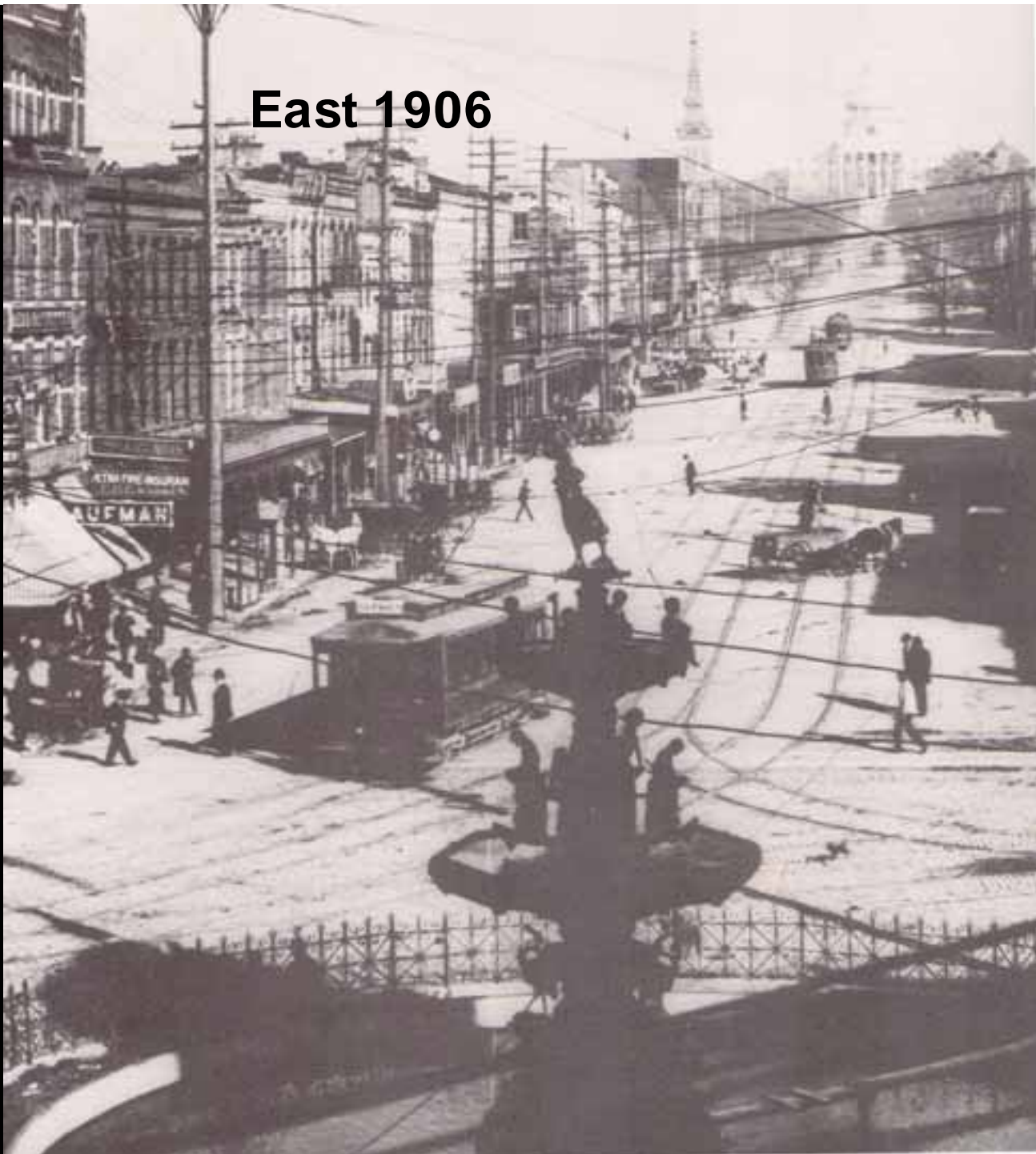


HPE

Hall Planning & Engineering, Inc.



East 1906



East 1926



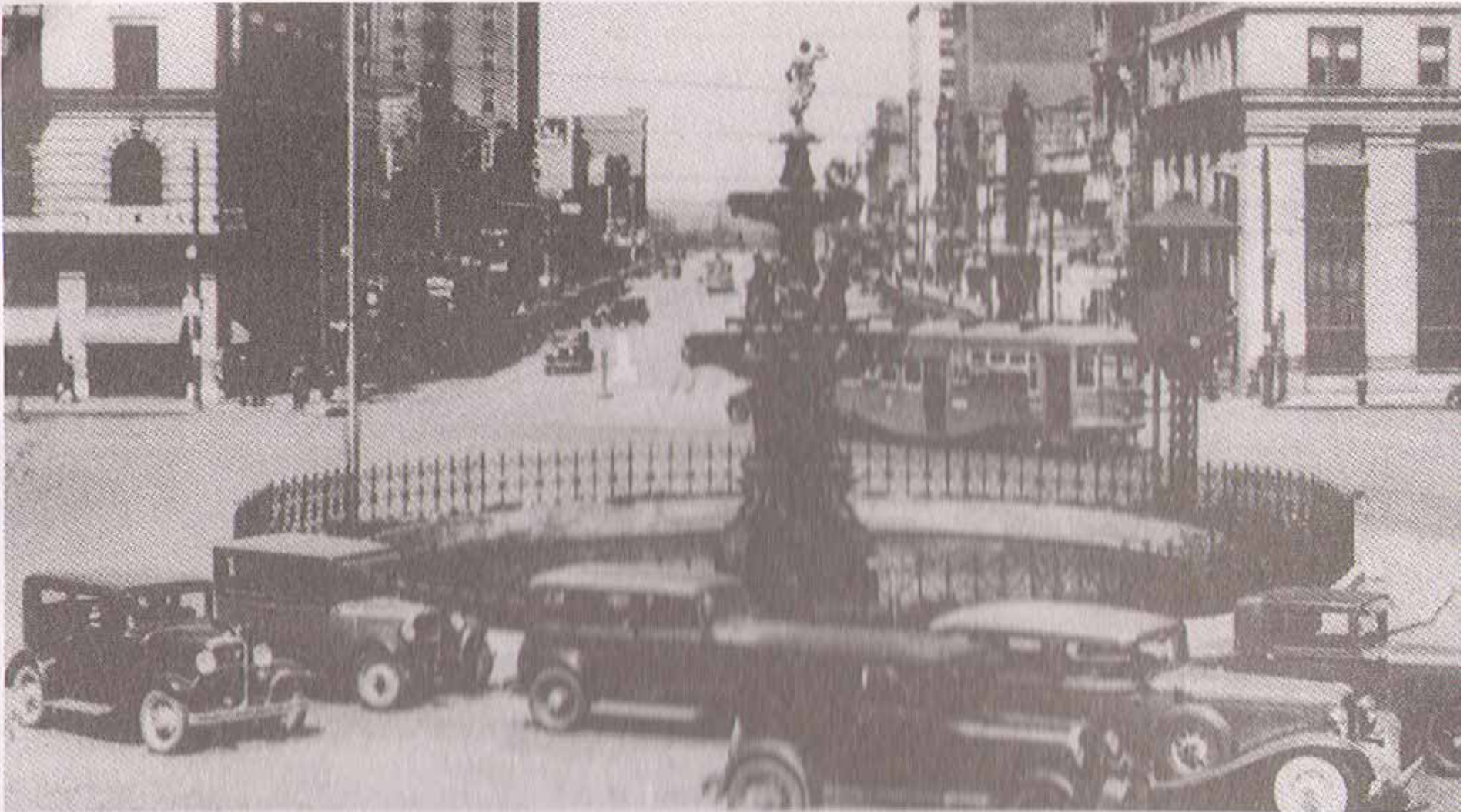
East 1950s



North 1917



North 1934



Northwest 2006





SIDEWALK
CLOSED



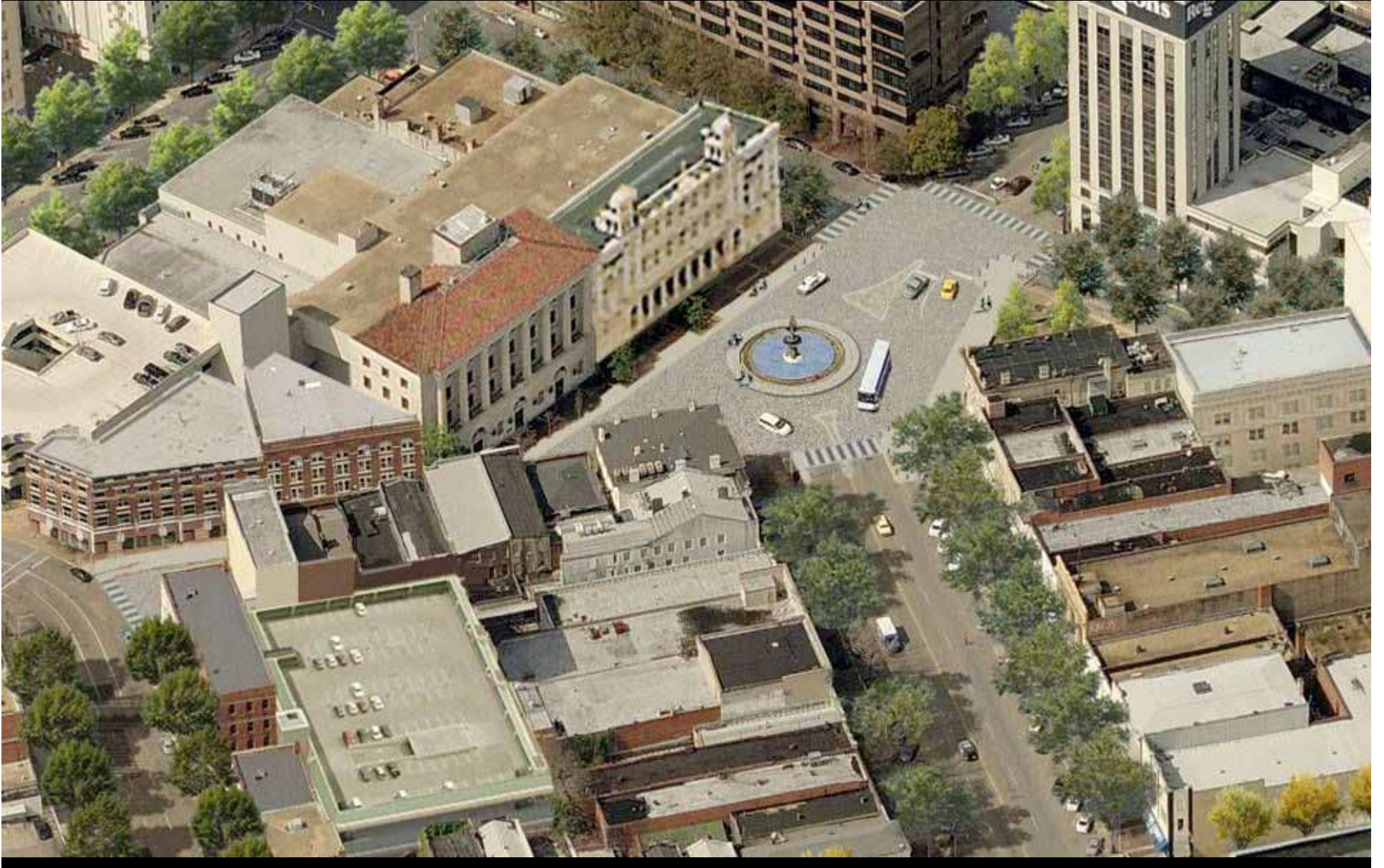
PLANNING



Dexter Avenue



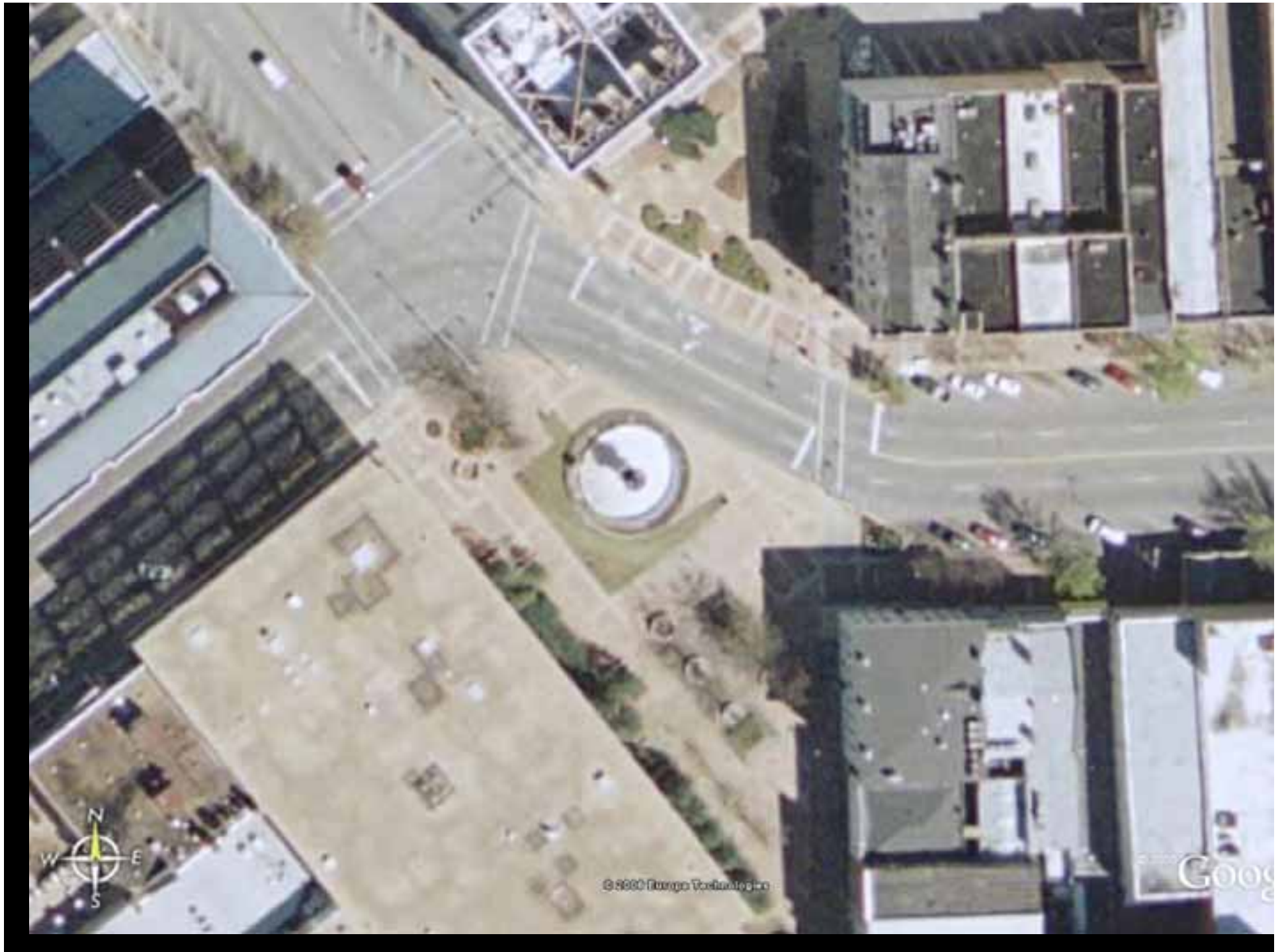
Dexter Avenue



Dexter Avenue

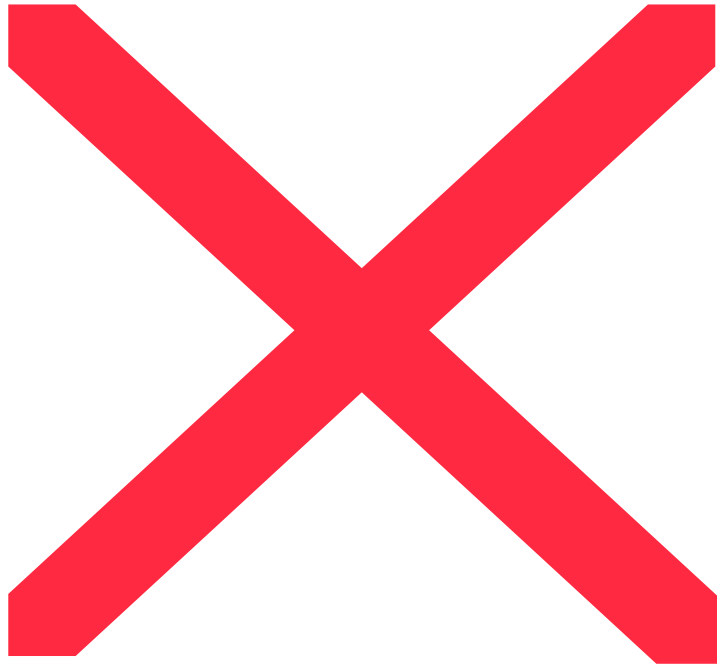


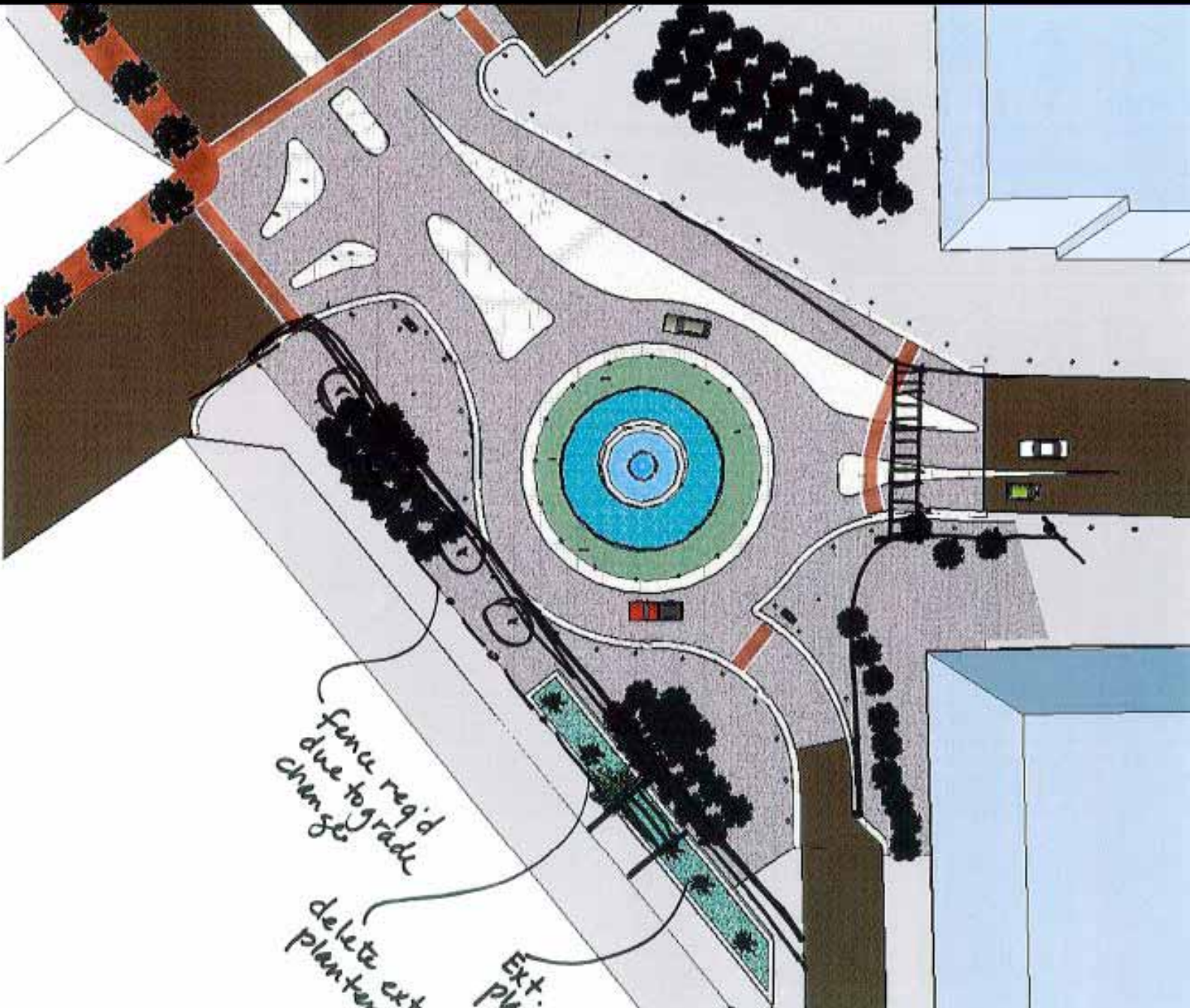
Dexter Avenue



© 2000 Google Technology

Google

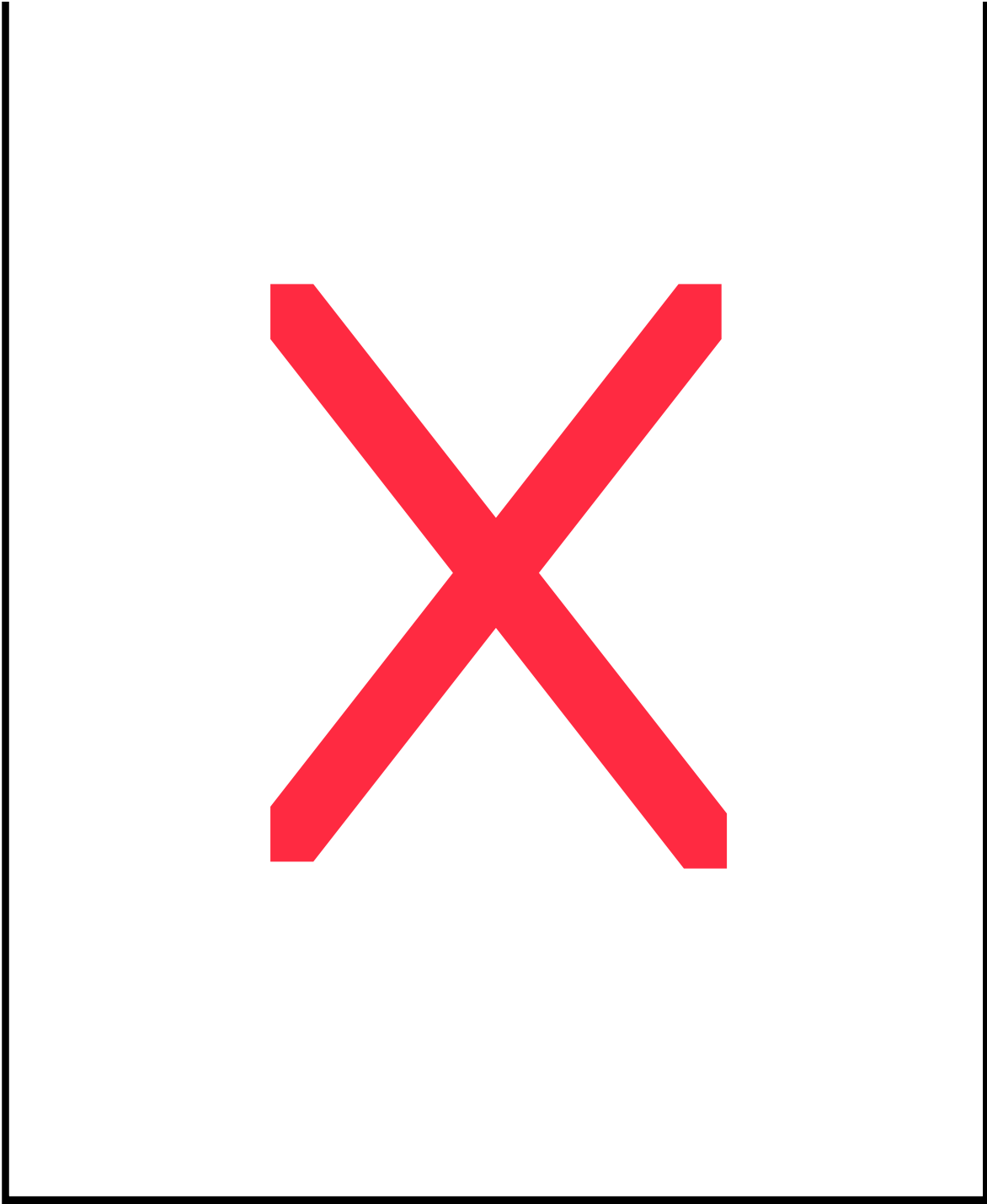
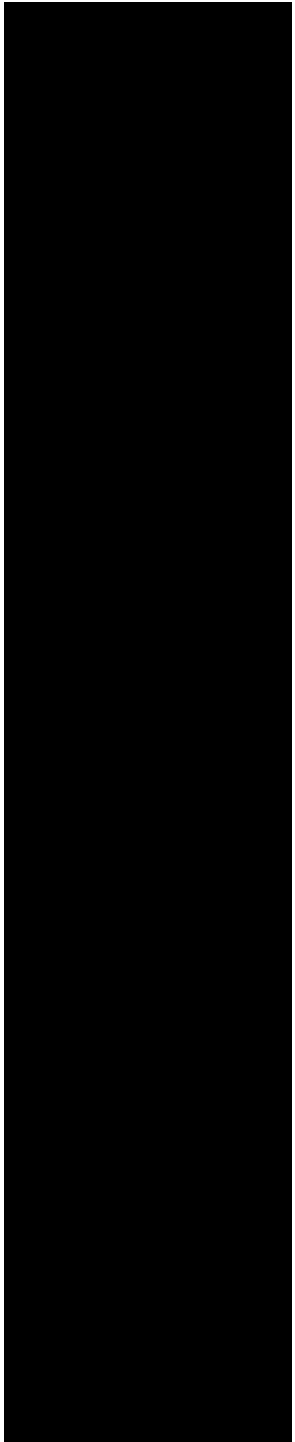




fence req'd
due to grade
change

delete ext
planter

Ext.
PV.



1. Crosswalks should be 10'-12' wide

2. Extend plaza cobble texture into intersection

4. Eliminate splitter islands

3. Street trees at edge of sidewalk

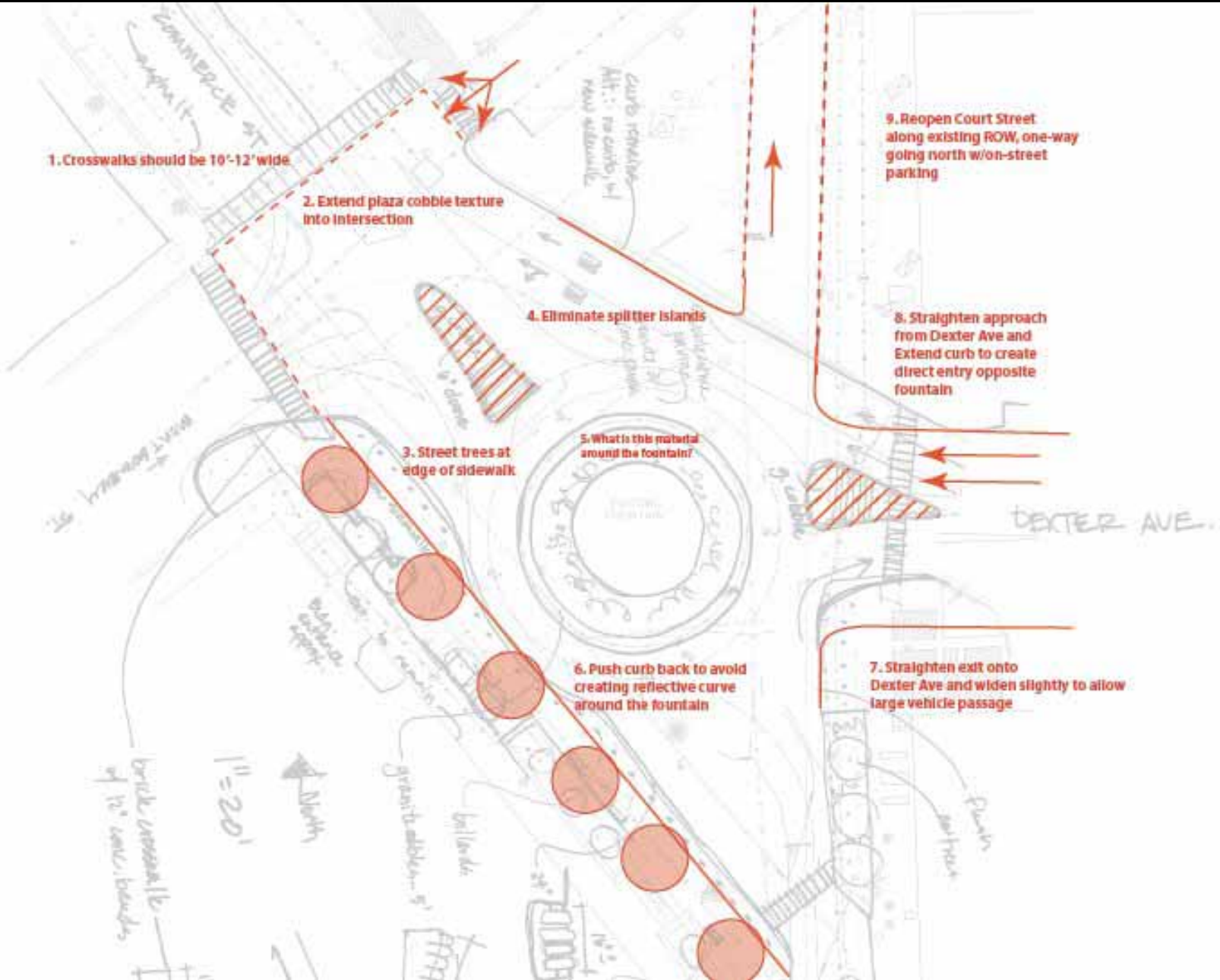
5. What is this material around the fountain?

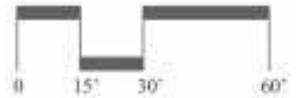
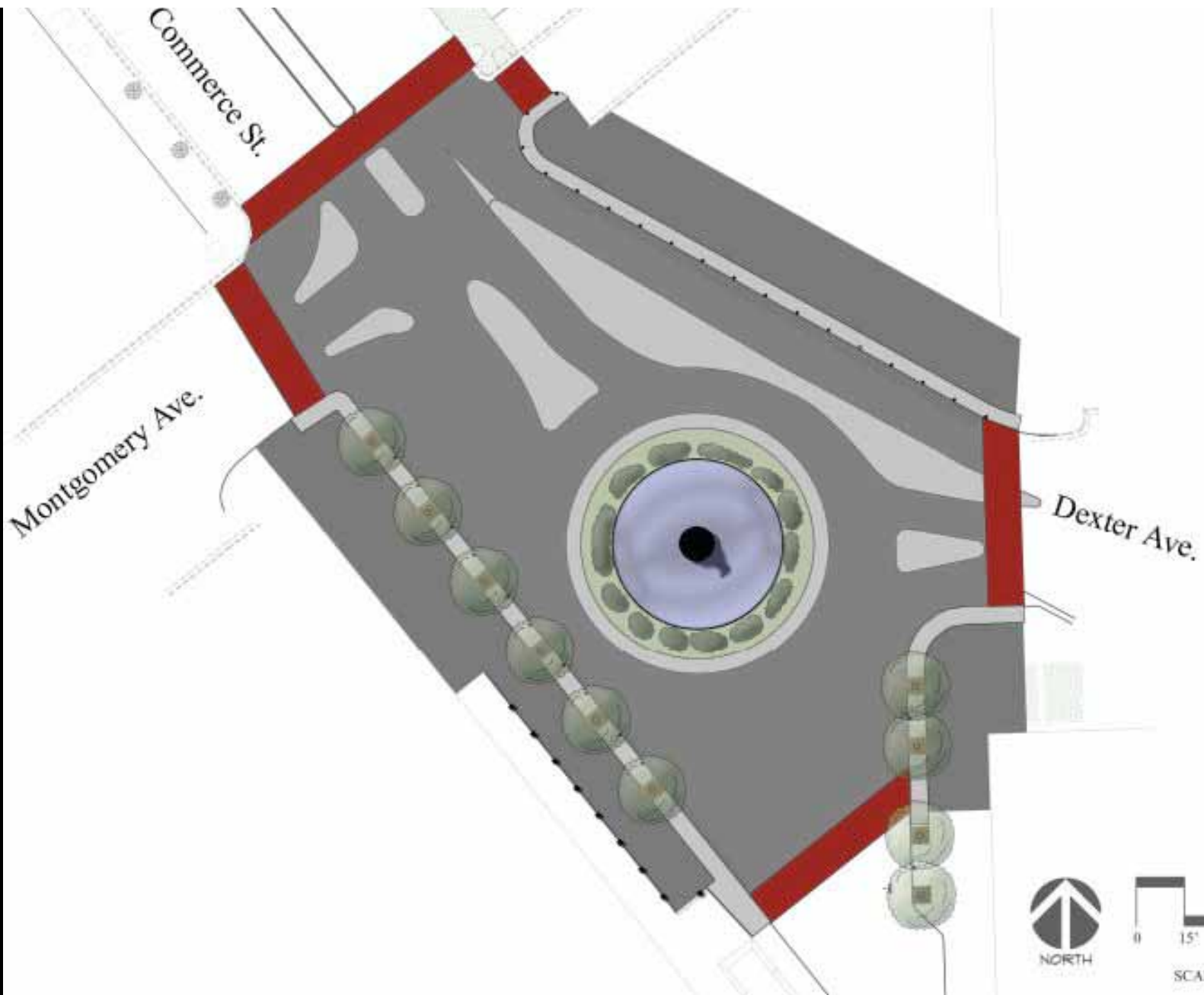
6. Push curb back to avoid creating reflective curve around the fountain

9. Reopen Court Street along existing ROW, one-way going north w/on-street parking

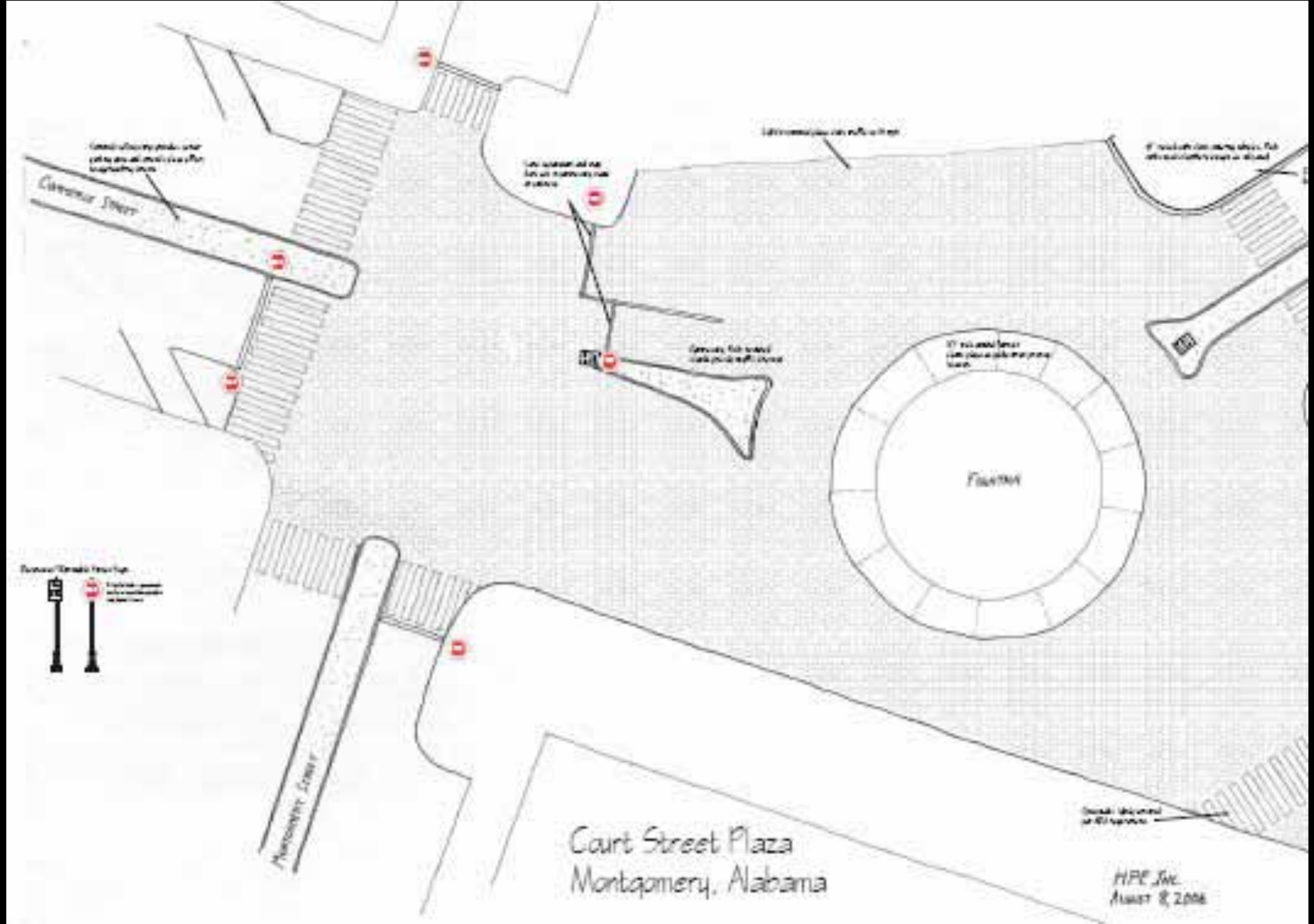
8. Straighten approach from Dexter Ave and extend curb to create direct entry opposite fountain

7. Straighten exit onto Dexter Ave and widen slightly to allow large vehicle passage





SCALE: 1" = 30'



Greenway Street

Greenway Street

Montgomery Street

Let's consider the
let us consider the
analysis

Let's consider the
let us consider the
analysis

Let's consider the
let us consider the
analysis

Let's consider the
let us consider the
analysis

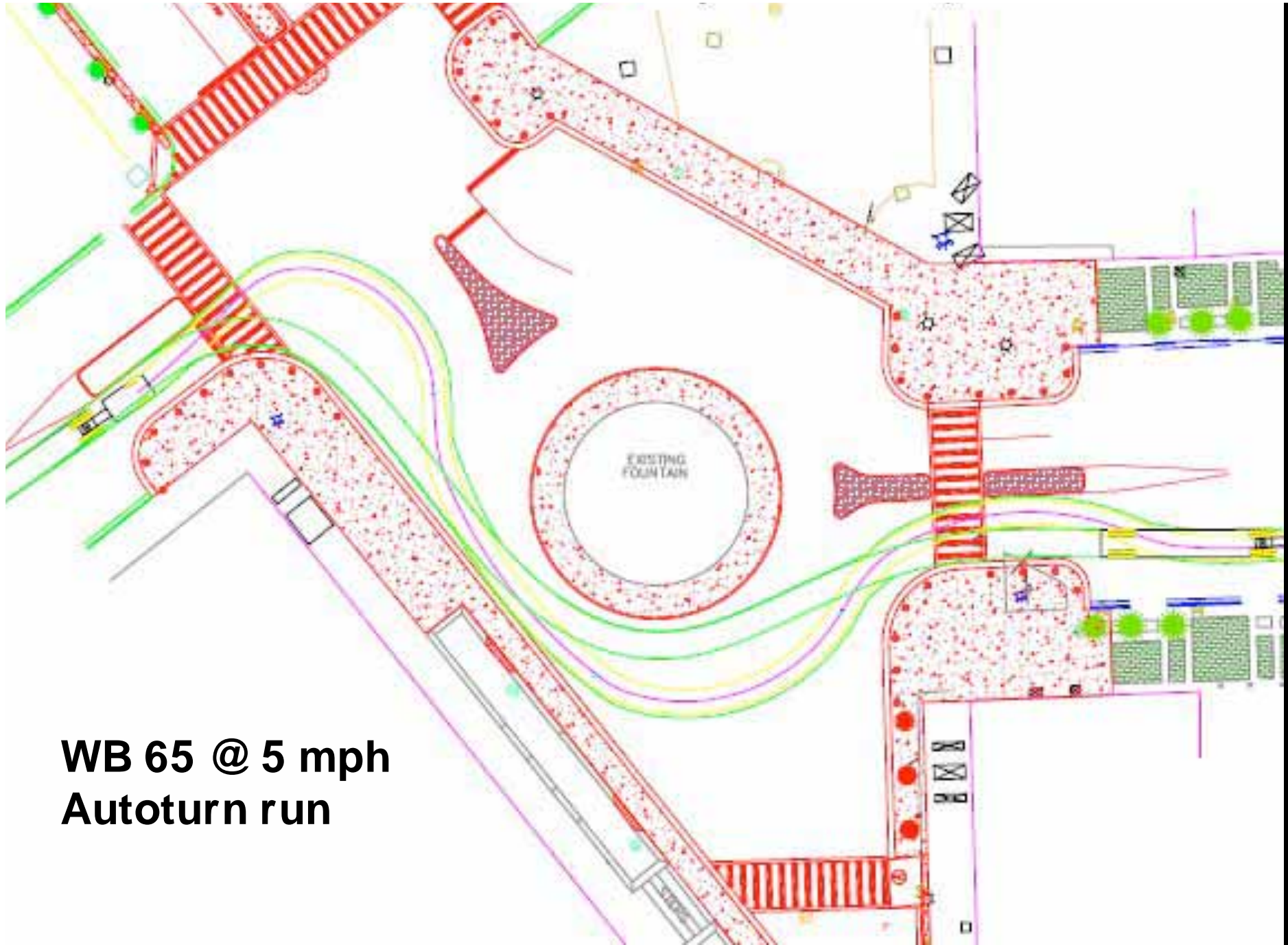
Let's consider the
let us consider the
analysis

Fountain



Court Street Plaza
Montgomery, Alabama

HPE, Inc.
August 8, 2008



**WB 65 @ 5 mph
Autoturn run**

CONSTRUCTION



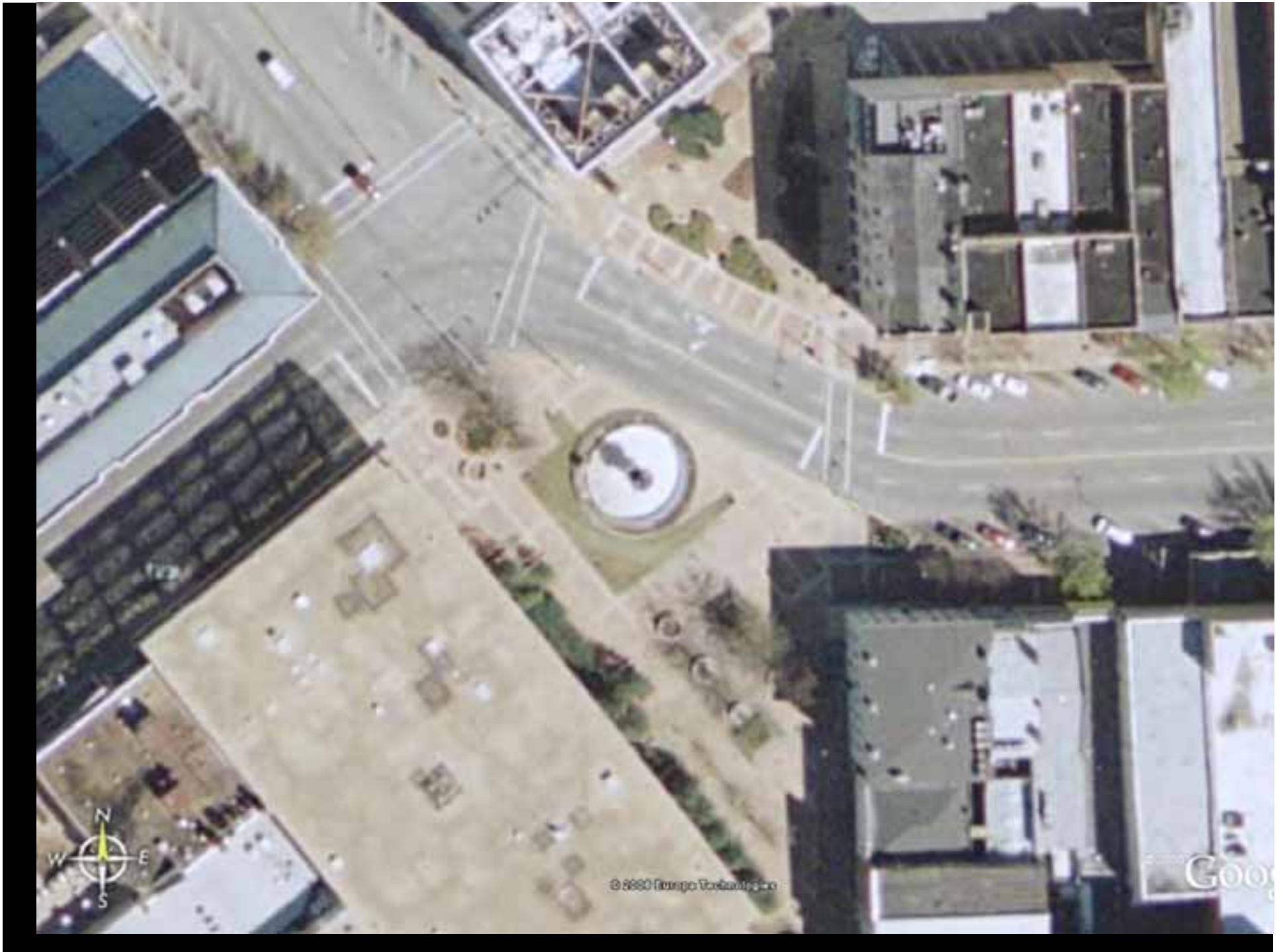
































03.08.2007



02 00 2007



03-12-2007



03.13.2007 13

OPENING CEREMONY

FOR IMMEDIATE RELEASE FROM THE OFFICE OF MAYOR BOBBY BRIGHT

Mayor Bobby Bright is proud to announce the grand re-opening of Court Square in historic downtown Montgomery. **A ceremony will be held on Tuesday, April 24, 2007 at 10:30am at the Court Square Plaza.** The ceremony will spotlight the completion of numerous downtown projects that are in keeping with the Downtown Plan that has been adopted after the work of Dover, Kohl and Associates was completed. The most notable project is the redesign of Court Square that has returned it to a more historic look and feel. The new square includes a Belgium cobblestone base, a roundabout, the opening of South Court Street, additional on-street parking, and a more pedestrian friendly environment.



















