

BLOCKS, STREETS, AND BUILDINGS TODAY:  
THE NEW CITY BEAUTIFUL

# CNU XIII Chicago

PALMER HOUSE HILTON

JUNE 24–27, 2004



# CNU is grateful for the leadership of the following supporters, sponsors, and partners of CNU XII.

## CNU XII SPONSORS

### CHARITABLE FOUNDATIONS

Illinois Clean Energy Community Foundation  
The Richard H. Driehaus Foundation

### TOWN FOUNDERS

Cornish Associates, LP  
Farr Associates

### MASTER BUILDERS

City of Chicago, Department of Planning and Development  
David M. Schwarz/Architectural Services, Inc.  
The Hankin Group  
Kimball Hill Homes  
McGuire Woods  
Moule & Polyzoides, Architects and Urbanists  
National Association of Realtors  
Trammell Crow

### ENTREPRENEURS

Arcadia Land Company  
Ayers Saint Gross, Architects and Planners  
Center for Neighborhood Technology  
Chicago Association of REALTORS  
Florida Atlantic University, Center for Urban and Environmental Solutions  
Holsten Real Estate Development Corporation  
International Council of Shopping Centers  
Jonathan Rose & Companies  
Lake Erie Land Company  
Leyland Alliance  
Looney Ricks Kiss Architects  
MCL Companies  
National Town Builders Association  
Nederveld Associates, Inc  
New Urban Living  
New Urban News  
PB PlaceMaking  
S.B. Friedman & Company  
Sharbell Development Corp.  
University of Illinois at Urbana-Champaign, College of Fine and Applied Arts  
Urban Design Associates  
URS Corporation  
Wallace, Roberts & Todd, LLC

### URBANISTS

The Bixby Company  
Chaddick Institute for Metropolitan Development at Depaul University  
Cooper Carry, Inc.  
Crawford Multari & Clark Associates D2  
Design, Community & Environment  
Dunes Country Partners LLC  
Economics Research Associates  
Elkus/Manfredi Architects  
Freilich, Leitner & Carlisle  
Georgia Institute of Technology, College of Architecture  
Goody, Clancy & Associates  
Hall Planning & Engineering, Inc.  
Ken Kay Associates

## URBANISTS continued

Kimley-Horn and Associates  
Lander Group, Inc.  
Landon Bone Baker Architects  
Local Initiative Support Corporation  
Meyer, Mohaddes Associates  
Metropolitan Planning Council  
Nagle Hartray Danker Kagan  
McKay Penney Architects Ltd.  
New Urban Ventures  
Norwood Builders  
Prairie Crossing  
Reconnecting America  
Retrovest Associates, Inc.  
Robinson & Cole LLP  
Rodgers Consulting, Inc.  
RTKL Associates, Inc.  
Schnader Harrison Segal & Lewis LLP  
Thomas Comitita Associates, Inc.  
Town of Normal  
University of Notre Dame, School of Architecture

We would like to acknowledge the following organizations for sending eight or more people to CNU XII:

City of Chicago Department of Planning and Development  
City of Lancaster, Texas  
Duany Plater-Zyberk & Co.  
Florida Atlantic University, Center for Urban and Environmental Solutions  
Freedman Tung & Bottomley  
Glating Jackson Kercher Anglin  
Lopez Rinehart, Inc.  
Next Generation of New Urbanists  
Torti Gallas and Partners  
Tunnell-Spangler-Walsh & Associates  
Urban Design Associates

## SCHOLARSHIP DONORS

Olon Dotson  
Russell Lewis  
Samuel Sherman

## CNU XII PARTNERS

America Walks  
American Institute of Architects  
American Planning Association  
American Society of Landscape Architects  
Andersonville Development Corporation  
Center for Neighborhood Technology  
Cincinnati Preservation Association  
Dade Heritage Trust  
Historic Districts Council  
Historic Hawaii Foundation  
Historic Savannah Foundation  
Knox Heritage  
Leadership Council for Metropolitan Open Communities  
Local Government Commission  
Louisiana Preservation Alliance  
National Center for Bicycling & Walking  
National Center for Smart Growth  
Metropolitan Planning Council  
Natural Resources Defense Council

## CNU XII PARTNERS continued

National Trust for Historic Preservation  
Pittsburgh History & Landmarks Foundation  
Preservation Delaware  
Preservation League of New York State  
Rail-Volution  
Scenic America  
Smart Growth America  
Tennessee Preservation Trust  
Urban Land Institute

**SPECIAL THANKS** to the Center for Neighborhood Technology for generously housing CNU's interim offices during our move to Chicago.

## LOCAL HOST COMMITTEE

### CHAIRS

Zachary Borders  
Doug Farr  
Jacky Grimshaw  
Peter Skosey

### MEMBERS

Christina Anderson  
Andre Brumfield  
Joyce Coffee  
Mary Eysenbach  
Kevin Hardman  
Elizabeth Hardy  
Carolee Kokola  
Charles Levesque  
Alicia Mazur-Berg  
Dennis McClendon  
Lynn Osmond

Kevin Pierce  
Rebecca Stamey-White  
Emily Talen  
Ron Thomas  
Mahender Vasandani  
David Watkins  
Jason Westrope  
Ruth Wourenma  
Carol Wyant

## CNU BOARD OF DIRECTORS

Hank Dittmar, Chair  
Daniel Solomon, Vice Chair  
Jacky Grimshaw, Treasurer  
Jonathan Barnett  
Zachary Borders  
Stephanie Bothwell  
Peter Calthorpe  
Judith A. Corbett  
Robert Davis  
Andrés M. Duany  
Raymond Gindroz  
Art Lomenick  
Elizabeth Moule  
Susan Mudd  
James Murley  
John Norquist  
Elizabeth Plater-Zyberk  
Stefanos Polyzoides  
Roxanne Qualls  
Todd Zimmerman

## CNU TASK FORCE CHAIRS

G.B. Arrington  
Kaid Benfield  
Richard Bernhard  
Phyllis Bleiweis  
Rick Chellman  
Paul Crawford  
Thomas DiGiovanni  
Doug Farr  
Steve Hurtt  
Marcy McInelly  
Peter Swift  
Dhiru Thadani  
Laurie Volk

## CNU STAFF

John Norquist, *President & CEO*  
Payton Chung, *Membership Coordinator*  
Stephen Filmanowicz, *Communications Director*  
Ellen Greenberg, *Director of Policy and Research*  
David Hudson, *Executive Vice President*  
Sandrine Milanello, *Congress Coordinator*



## WEDNESDAY AND THURSDAY

### WEDNESDAY | June 23

---

3:00 PM – 7:00 PM

#### CONGRESS REGISTRATION

Sixth Floor Lobby, Palmer House Hilton

### THURSDAY | June 24

---

7:30 AM – 7:00 PM

#### CONGRESS REGISTRATION

Sixth Floor Lobby, Palmer House Hilton

7:00 AM – 9:00 AM

#### CONTINENTAL BREAKFAST

Monroe/Adams/Red Lacquer Ballroom Foyers

---

## New Urbanism 101

A day-long immersion course in the principles and techniques of New Urbanism, updated for 2004 with new topics and speakers

9:00 AM – 4:00 PM

Grand Ballroom

This in-depth program is open to all members attending the full congress and others getting a first taste of New Urbanism by attending Thursday only. Sessions on the movement's history and principles will be supplemented by segments on the link between public health and urban design, green urbanism, and a panel discussion on new urbanist retailing.

*Speakers include:*

**John Torti**, PRINCIPAL, TORTI GALLAS AND PARTNERS

**Dhiru Thadani**, PRINCIPAL, AYERS SAINT GROSS, ARCHITECTS AND PLANNERS

**Anne Vernez Moudon**, PROFESSOR OF ARCHITECTURE, LANDSCAPE ARCHITECTURE, URBAN DESIGN AND PLANNING, UNIVERSITY OF WASHINGTON

**Charles C. Bohl**, FACULTY / DIRECTOR, COMMUNITY BUILDING PROGRAM, UNIVERSITY OF MIAMI SCHOOL OF ARCHITECTURE

**Daniel Slone**, ATTORNEY, MCGUIRE WOODS BATTLE & BOOTHE LLP

**Doug Farr**, PRINCIPAL, FARR & ASSOCIATES

---

## New Urbanism 202

INTENSIVE SEMINARS WITH THE EXPERTS

*These sessions require registration and a separate fee.*

### Morning Sessions

9:00 AM – 12:00 PM

#### FINANCING THE NEW URBANISM

Adams Ballroom

**Christopher B. Leinberger**, PARTNER, ARCADIA LAND COMPANY

#### REAL STREETS: *Designing, Getting, and Keeping Them*

Red Lacquer Ballroom

**Walter Kulash**, PRINCIPAL, GLATTING JACKSON KERCHER ANGLIN LOPEZ RINEHART, INC.

#### TRANSIT-ORIENTED DEVELOPMENT: *Making it Work in the Marketplace*

Monroe Ballroom

#### RECONNECTING AMERICA'S CENTER FOR TRANSIT-ORIENTED DEVELOPMENT:

**Hank Dittmar**

**Shelley Poticha**

**Dena Belzer**

**Scott Bernstein**

**Julia Parzen**



THURSDAY CONTINUED

## Afternoon Sessions

1:00 PM – 4:00 PM

### TOP TECHNIQUES FOR SUCCESSFUL CHARRETTES

Adams Ballroom

**Bill Lennertz**, EXECUTIVE DIRECTOR, NATIONAL CHARRETTE INSTITUTE

**Victor Dover**, PRINCIPAL, DOVER, KOHL & PARTNERS TOWN PLANNING

**Steve Coyle**, CO-FOUNDER, THE NATIONAL CHARRETTE INSTITUTE & LCA TOWN PLANNING & ARCHITECTURE, LLC

### MIXED-USE TOWN CENTERS:

*Tenant Selection, Programming, Planning, and Design*

Red Lacquer Ballroom

**Robert Gibbs**, FOUNDER, GIBBS PLANNING GROUP INC.

### DEVELOPING THE NEW URBANISM

Monroe Ballroom

**Laurie Volk**, ZIMMERMAN/VOLK ASSOCIATES, INC.

**Todd Zimmerman**, ZIMMERMAN/VOLK ASSOCIATES, INC., CNU BOARD MEMBER

**William H. Tucker**, MANAGING DIRECTOR, ARCADIA LAND COMPANY, PRESIDENT, TUCKER & ASSOCIATES, INC.

**William Gietema**, ARCADIA REALTY CORP.

## Tours *(require registration and separate fee)*

9:30 AM – 4:00 PM

**A:** Prairie Crossing

9:00 AM – 12:30 PM

**B:** Chicago Highlights

9:00 AM – 1:00 PM

**C:** Boulevards and Streetcar Strips

9:00 AM – 1:00 PM

**D:** Green Architecture\*

9:30 AM – 12:00 PM

**E:** Legacy of the Plan of Chicago

10:00 AM – 11:30 AM

**F:** River Cruise

1:00 PM – 2:30 PM

**G:** River Cruise

1:00 PM – 3:00 PM

**H:** Wicker Park

1:00 PM – 5:00 PM

**I:** Cabrini/North Avenue/North Branch Redevelopment

1:00 PM – 5:30 PM

**J:** North Shore Railroad Suburbs

2:00 PM – 5:00 PM

**K:** Lakefront by Bike

3:30 PM – 5:30 PM

**L:** South Loop Redevelopment

3:30 PM – 5:30 PM

**M:** Redevelopment of Downtown

---

## Plenary Session

4:15 PM – 5:45 PM

### AMENDING THE CHARTER OF THE NEW URBANISM

Grand/State Ballroom

The Charter of the New Urbanism has not been amended since it was signed in 1996. Now, the CNU Board of Directors is initiating a number of proposed amendments that will address emerging themes, including the continuum of rural-to-urban contexts, the Charter's relationship to environmental issues, the morphology and location of job centers, and the need for regulations to implement New Urbanism. CNU co-founder and Board Member Dan Solomon will lead this discussion with fellow Board members and session participants.

---

5:45 PM – 7:30 PM

### DINNER ON YOUR OWN

*See our Chicago Guide for restaurants located near the Palmer House Hilton.*

\*Supported by a grant from the Illinois Clean Energy Community Foundation

---

## Opening Night

Palmer House Hilton

7:30 PM – 8:30 PM

### OPENING RECEPTION

Red Lacquer Ballroom

## Opening Session

8:30 PM – 10:00 PM

Grand/State Ballroom

### SEEDS OF PROSPERITY:

*How Urbanism Can Rebuild Community, Expand Opportunity, and Add Value to the Economy*

A group of visionary leaders are promoting urbanism as a central part of their platforms. Chicago's master builder, Mayor Richard M. Daley, has been invited to speak about the profound resurgence of urbanism in his growing city. CNU President and former Milwaukee Mayor John Norquist will describe the essential role of design and density in energizing urban real estate markets. He and CNU Board Chair Hank Dittmar will unveil a vision for CNU as a champion of urbanism. CNU board members will join this session to open the Congress and welcome participants to Chicago.

*Speakers:*

**Honorable Richard M. Daley**, MAYOR, CITY OF CHICAGO

**John Norquist**, PRESIDENT AND CEO, CONGRESS FOR THE NEW URBANISM

**Hank Dittmar**, PRESIDENT AND CEO, RECONNECTING AMERICA, CNU BOARD MEMBER

**Jacky Grimshaw**, CENTER FOR NEIGHBORHOOD TECHNOLOGY, VICE PRESIDENT FOR POLICY, TRANSPORTATION & COMMUNITY DEVELOPMENT, CNU BOARD MEMBER

---



---

## FRIDAY | June 25

7:30 AM – 5:30 PM

### CONGRESS REGISTRATION

Sixth Floor Lobby, Palmer House Hilton

7:00 AM – 8:00 AM

### CONTINENTAL BREAKFAST

Grand & State Ballroom Foyers

---

## Plenary Session

8:00 AM – 9:30 AM

Grand/State Ballroom

### WELCOME AND OVERVIEW OF THE DAY

**Jacky Grimshaw**, CENTER FOR NEIGHBORHOOD TECHNOLOGY, VICE PRESIDENT FOR POLICY, TRANSPORTATION & COMMUNITY DEVELOPMENT, CNU BOARD MEMBER

### THE TRADITIONAL CITY

Chicago is the starting point for this study of traditional urbanism in the contemporary context. Howard Decker will explore the defining conditions that shaped Chicago and other great cities that came of age in the 19th Century, before turning the discussion to award-winning new plans for Chicago that build on the strengths of its traditional urban form in adapting the city to meet current needs. Closing remarks will describe how the idea of the traditional city will be addressed throughout the Congress and considered in juxtaposition with ideas and techniques of the modernist city and the sustainable city.

*Moderator:*

**Ray Gindroz**, PRINCIPAL, URBAN DESIGN ASSOCIATES, CNU BOARD MEMBER

*Speakers:*

**Howard S. Decker**, CHIEF CURATOR, NATIONAL BUILDING MUSEUM

**George Ranney**, PRESIDENT AND CEO, CHICAGO METROPOLIS 2020

---

9:30 AM – 9:45 AM

### MID-MORNING BREAK

Grand & State Ballroom Foyers

Refreshments provided





FRIDAY CONTINUED

## Five Concurrent Sessions

9:45 AM – 11:15 AM

### WORKING WITH THE TRADITIONAL CITY

Red Lacquer Ballroom

Efforts to adapt the traditional city to current uses, especially traffic demands, have resulted in damage to the historic fabric of many beautiful towns and cities. By working with the inherited physical form in new ways, many cities are finding renewed life. This fast-paced session will review streets, squares, blocks and buildings in Glasgow, Scotland; Newcastle and York, England; and Chicago.

*Moderator:*

**Raymond Gindroz**, PRINCIPAL, URBAN DESIGN ASSOCIATES, CNU BOARD MEMBER

*Panelists:*

**Alan Simpson**, HEAD OF URBAN RENAISSANCE, YORKSHIRE FORWARD/VICTORIA HOUSE

**Brian Evans**, PARTNER, GILLESPIES LLP

**John Thompson**, CHAIRMAN, JOHN THOMPSON & PARTNERS, CHAIRMAN, RIBA, URBANISM AND PLANNING GROUP

**Dianne Legge Kemp**, PRINCIPAL, DLK ARCHITECTURE INC.

### THE EVOLUTION OF URBAN DESIGN

Monroe Ballroom

Colin Rowe and his urban design studio at Cornell had a tremendous impact on theory, practice, and education. Rowe's early teachings sought a reconciliation of the traditional and modern city, and sparked the theory of contextualism. *Collage City* by Rowe and Koetter rationalized the theories and propounded the arguments. Four of Rowe's students will discuss the evolution and realization of these ideas.

*Moderator:*

**Steve Hurtt**, DEAN, SCHOOL OF ARCHITECTURE, UNIVERSITY OF MARYLAND

*Panelists:*

**Fred Koetter**, PRINCIPAL, KOETTER KIM & ASSOCIATES

**Michael Dennis**, PRINCIPAL, MICHAEL DENNIS & ASSOCIATES; PROFESSOR, MASSACHUSETTS INSTITUTE OF TECHNOLOGY

**Steven Peterson**, PARTNER, PETERSON LITTENBERG, ARCHITECTURE & URBAN DESIGN

**Barbara Littenberg**, PARTNER, PETERSON LITTENBERG, ARCHITECTURE & URBAN DESIGN

### THE HIGH-INTENSITY BLOCK

Adams Ballroom

Urban projects of over 40 units per acre often face the toughest challenges. In the face of big-city scrutiny by the public and the market, they must provide both a superior streetscape and the vast quantities of parking that investors demand. This session will present case studies of high-density blocks that adhere to the Charter principles while accommodating the realities of politics and finance.

*Moderator:*

**Jeff Speck**, DIRECTOR OF DESIGN, NATIONAL ENDOWMENT FOR THE ARTS

*Panelists:*

**Ralph Johnson**, DIRECTOR OF DESIGN, PERKINS & WILL, INC.

**Tiffany Sweitzer**, PRESIDENT, HOYT STREET PROPERTIES

**Robert Freedman**, DIRECTOR OF URBAN DESIGN, CITY OF TORONTO

### NEW URBANISM ON THE PRAIRIE

Salons 1 – 4

The railroad lines stretching out into the prairies surrounding Chicago seeded many compact, pedestrian-friendly towns and cities. These historic communities serve as models for new urbanists. Whether they are downstate cities, collar counties managing growth, or compact new towns, communities that recognize traditional urban fabric as a key asset are overcoming challenges and earning a competitive advantage in the region.

*Moderator:*

**MarySue Barrett**, PRESIDENT, METROPOLITAN PLANNING COUNCIL

*Panelists:*

**Honorable Chris Koos**, MAYOR, TOWN OF NORMAL, IL

**Grant Langdon**, PRESIDENT, WILSHIRE CORP., PRINCIPAL, PROVIDENCE LLC

**Phillip Bus**, EXECUTIVE DIRECTOR, KANE COUNTY DEVELOPMENT DEPARTMENT

### CERTIFYING NEW URBANISM

Grand/State Ballroom

The marriage of the terms certification and New Urbanism has been discussed for some time. Now, with rating systems gaining currency in the green building movement, there's new urgency to the



question: Should new urbanist projects be certified? If so, how? Is there potential to join new urbanist and green building certification? Can professional practices be acknowledged as new urbanist? If so, what are the criteria? The audience will be asked to advance the discussion of this important topic.

*Moderator:*

**Jim Murley**, DIRECTOR, CENTER FOR URBAN AND ENVIRONMENTAL SOLUTIONS, FLORIDA ATLANTIC UNIVERSITY, CNU BOARD MEMBER

*Panelists:*

**Shelley Poticha**, EXECUTIVE DIRECTOR, RECONNECTING AMERICA'S CENTER FOR TRANSIT-ORIENTED DEVELOPMENT

**Elizabeth Plater-Zyberk**, PRINCIPAL, DUANY PLATER-ZYBERK & CO. AND DEAN, UNIVERSITY OF MIAMI SCHOOL OF ARCHITECTURE, CNU BOARD MEMBER

**Susan Mudd**, ENVIRONMENTAL ATTORNEY, CNU BOARD MEMBER

**Nathan R. Norris**, PRINCIPAL, PLACEMAKERS, L.L.C.

---

## CNU Task Force Meetings

11:45 AM – 1:30 PM

### TRANSPORTATION TASK FORCE

Salons 5–8

### PLANNERS TASK FORCE

Adams Ballroom

### ENVIRONMENT TASK FORCE

Red Lacquer Ballroom

### EDUCATORS TASK FORCE

Salons 1–4

### DESIGN TASK FORCE

Monroe Ballroom

### DOWNTOWN/URBAN INFILL TASK FORCE NEW TOWN/SUBURBAN INFILL TASK FORCE

Grand Ballroom

### A GATHERING OF STUDENT MEMBERS

Parlor A

*Note: You are welcome to bring a bag lunch to the meeting.*

---

## Plenary Session

1:45 PM – 3:15 PM

### THE MODERNIST CITY

Grand/State Ballroom

The arrival of Mies Van der Rohe in the city that invented the skyscraper — and the arrival of the ideas of his fellow modernists — resulted in new forms. Some have strengthened the quality of urban space. More have not. Although the modernist movement's progeny include desolate public housing towers, sterile business parks and sprawl zoning, a close look shows a more complicated legacy. Both the original concepts and their continuing reinterpretations will be examined. Pulitzer-prize-winning critic Robert Campbell will lead this discussion on the challenges modernism poses to urbanism and the possibilities for redeeming this legacy.

*Moderator:*

**Robert Campbell**, ARCHITECT AND WRITER

*Speakers:*

**Donna Robertson**, DEAN, COLLEGE OF ARCHITECTURE, ILLINOIS INSTITUTE OF TECHNOLOGY

**Thomas H. Beeby**, PRESIDENT AND DIRECTOR OF DESIGN, HAMMOND BEEBY RUPERT AINGE INC.

---

3:15 PM – 3:30 PM

### MID-AFTERNOON BREAK

Grand & State Ballroom Foyers

Refreshments provided

---

## Five Concurrent Sessions

3:30 PM – 5:00 PM

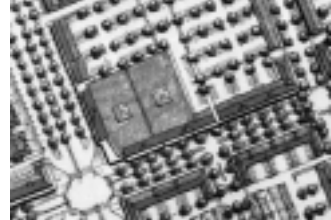
### BLOCK TYPES: *Learning from Precedent*

Red Lacquer Room

The block is fundamental to the creation of a neighborhood and pedestrian environment. Precedents for the use of three types of blocks — regular, irregular, and elongated — will be explored to teach how each can be used in different contexts. This session will offer a typology of blocks across the transect and illuminate their characteristics and influence on building and street design.

**Dhiru A. Thadani**, PRINCIPAL, AYERS SAINT GROSS, ARCHITECTS AND PLANNERS

**Andrés Duany**, PRINCIPAL, DUANY PLATER-ZYBERK & CO., CNU BOARD MEMBER



## FRIDAY CONTINUED

### BIG BOX ON A SMALL BLOCK

Grand/State Ballroom

Many new urban neighborhoods are incomplete because planned retail space remains unbuilt. Central city locations also feel the pain of the retail industry's emphasis on large footprint stores, mega-parking, and high traffic-volume locations. Responses to the continuing tension between the big box of contemporary retail and the small block of new and old urban environments are the focus of this session.

*Moderator:*

**Lee Sobel**, SPECIALIST, U.S. ENVIRONMENTAL PROTECTION AGENCY

*Panelists:*

**Robert Gibbs**, FOUNDER, GIBBS PLANNING GROUP, INC.

**Dena Belzer**, PRINCIPAL, STRATEGIC ECONOMICS

**Kevin Klinkenberg**, PRINCIPAL, 180 DEGREE STUDIO

**Dan McCaffery**, PRINCIPAL, McCAFFERY INTERESTS, INC.

### THE FATE OF THE ARTERIAL

Salons 1-4

Arterials are the streets we love to hate — but what will replace them? CNU's Transportation Task Force members imagine that many will evolve into new urbanist boulevards and avenues, but others will have to do a better job of carrying through traffic while also being more sensitive to context. Leading practitioners and session participants will critique the work of the task force and consider whether the "arterial" should be vanquished.

*Moderators:*

**Rick Chellman**, PRINCIPAL, TND ENGINEERING

*Panelists:*

**Norman W. Garrick**, ASSOCIATE PROFESSOR, CONNECTICUT TRANSPORTATION INSTITUTE, UNIVERSITY OF CONNECTICUT

**Ellen Greenberg**, DIRECTOR OF POLICY AND RESEARCH, CONGRESS FOR THE NEW URBANISM

**Hal Kassoff**, VICE PRESIDENT, PARSONS BRINCKERHOFF INC.

**Wendy Morris**, DIRECTOR (URBAN DESIGN AND PLANNING), ECOLOGICALLY SUSTAINABLE DESIGN, AUSTRALIA

### TUTORIALS ON TYPE

Monroe Ballroom

Certain building types are essential to implementing New Urbanism. In this session focused on understanding type as the cornerstone in the creation of sustainable places, designers and developers will focus on three component parts of new urbanist neighborhoods—the townhouse, courtyard housing, and live/work space.

*Moderator:*

**Stuart E. Cohen**, PRINCIPAL, STUART COHEN & JULIE HACKER ARCHITECTS

*Panelists:*

**Thomas Dolan**, PRINCIPAL, THOMAS DOLAN ARCHITECTURE

**Stefanos Polyzoides**, PARTNER, MOULE & POLYZOIDES, ARCHITECTS AND URBANISTS, CNU BOARD MEMBER

**Katharine Kelley**, PRESIDENT, GREEN STREET PROPERTIES, LLC

### THE ART OF STORMWATER\*

Adams Ballroom

American urbanists often view on-site stormwater requirements as significant barriers to developing dense urban projects. This session will showcase the internationally known work of Atelier Dreiseitl, which artfully integrates stormwater detention and filtration at urban densities. American practitioners, working in the same vein, will link these strategies to the U.S. context.

*Moderator:*

**Tom Richman**, PRINCIPAL, CATALYST

*Panelists:*

**Herbert Dreiseitl**, PRINCIPAL, ATELIER DREISEITL

**Milt Rhodes**, PROJECT DIRECTOR, DOVER, KOHL AND PARTNERS

---

5:30 PM – 7:00 PM

### FRIDAY EVENING SALONS

Red Lacquer Ballroom

Salons are informal gatherings for CNU members to discuss their work. Sign up your topic at the registration Desk. Cash bar provided.

5:30 PM – 7:30 PM

### FLORIDA CNU CHAPTER SUPER SALON

Monroe Ballroom

10:00 PM and on

### YOUNG AND YOUNG AT HEART OUT IN LINCOLN PARK

Join young new urbanists for a night at some of the best establishments in one of Chicago's best neighborhoods. Meet in the lobby of Palmer House Hilton.





# SATURDAY

## SATURDAY | June 26

---

7:00 AM – 5:30 PM

### CONGRESS REGISTRATION

Sixth Floor Lobby, Palmer House Hilton

7:00 AM – 8:00 AM

### CONTINENTAL BREAKFAST

Grand & State Ballroom Foyers

---

## Plenary Session

8:00 AM – 9:30 AM

Grand/State Ballroom

### WELCOME AND OVERVIEW OF THE DAY

**G.B. Arrington**, SENIOR PROFESSIONAL ASSOCIATE, PB PLACEMAKING, CNU TASK FORCES CHAIR

### THE SUSTAINABLE CITY

The last ten years have produced a burst of visionary principles and standards designed to reform patterns of human settlement—Ahwahnee, Hanover, Aalborg Charter, CNU Charter, Smart Growth, LEED, and the Transect. As a result, today the goals of sustainability and urbanism are coming together. This panel convenes leaders in government, academia, and new urban practice working to forge a meaningful union of these sometimes reinforcing, sometimes contradicting sets of principles.

*Moderator:*

**Roxanne Qualls**, VISITING PROFESSOR, NORTHERN KENTUCKY UNIVERSITY, CNU BOARD MEMBER

*Speakers:*

**Timothy Beatley**, TERESA HEINZ PROFESSOR OF SUSTAINABLE COMMUNITIES, UNIVERSITY OF VIRGINIA

**David Reynolds**, DEPUTY COMMISSIONER, CITY OF CHICAGO, DEPARTMENT OF THE ENVIRONMENT

**Doug Farr**, PRESIDENT, FARR ASSOCIATES, ARCHITECTURE AND URBAN DESIGN

---

9:30 AM – 9:45 AM

### MID-MORNING BREAK

Adams and Monroe Ballroom Foyers  
Refreshments provided

9:30 AM – 5:30 PM

### GREEN ENERGY AND RENEWABLE PRODUCTS EXHIBIT\*

Sixth Floor Lobby

---

## Five Concurrent Sessions

9:45 AM – 11:15 AM

### TECHNIQUES FOR SUSTAINABLE URBANISM

Adams Ballroom

This session will showcase essential techniques and strategies for enhancing the sustainability of the traditional urban form. Find out what population densities are needed to make transit viable, how to treat stormwater on-site across the transect, synergies between green buildings and urbanism, and the role of grass roots planning for sustainability.

*Moderator:*

**Kevin Pierce**, PRINCIPAL, FARR ASSOCIATES

*Panelists:*

**Paul C. Okamoto**, PRINCIPAL, OKAMOTO SAIJO ARCHITECTURE, BOARD MEMBER, URBAN ECOLOGY

**Jim Patchett**, FOUNDER & PRESIDENT, CONSERVATION DESIGN FORUM

**Hank Dittmar**, PRESIDENT, RECONNECTING AMERICA, CNU BOARD MEMBER

### THE COMING DEMAND

Monroe Ballroom

The aging of the baby boomer generation is increasing the demand for accessible and visitable housing and neighborhoods. Implementation of accessibility regulations, in some cases, has created obstacles for mixed-use, mixed-income neighborhoods. New urbanists and accessibility advocates continue a dialogue aimed at resolving conflicts and finding creative solutions.



## THE COMING DEMAND *continued*

### *Moderator:*

**Ramon Garcia**, PLANNER, IDEA CENTER, UNIVERSITY AT BUFFALO SCHOOL OF ARCHITECTURE & PLANNING

### *Panelists:*

**Eleanor Smith**, EXECUTIVE DIRECTOR, CONCRETE CHANGE  
**Edward Steinfeld**, PROFESSOR OF ARCHITECTURE/DIRECTOR, IDEA CENTER, SCHOOL OF ARCHITECTURE AND PLANNING, UNIVERSITY AT BUFFALO, STATE UNIVERSITY OF NEW YORK  
**Murphy Antoine**, ASSOCIATE PRINCIPAL, TORTI GALLAS AND PARTNERS  
**Art Lomenick**, MANAGING DIRECTOR, TRAMMELL CROW, CNU BOARD MEMBER

### *Introductions by:*

**Elizabeth Plater-Zyberk**, PRINCIPAL, DUANY PLATER-ZYBERK & CO. AND DEAN, UNIVERSITY OF MIAMI SCHOOL OF ARCHITECTURE, CNU BOARD MEMBER

## CODING MODERNISM

*Salons 5-8*

The Charter of the New Urbanism explicitly says that New Urbanism is not specific to a particular architectural style. Three leading designers teach how the principles can be expressed in codes that permit both traditional architecture and the many varieties of modernism.

### *Moderator:*

**John Massengale**, VERITAS & VENUSTAS

### *Panelists:*

**Neal I. Payton**, PRINCIPAL, TORTI GALLAS AND PARTNERS  
**Andrés Duany**, PRINCIPAL, DUANY PLATER-ZYBERK & CO., CNU BOARD MEMBER  
**Paul Murrain**, DIRECTOR OF THE URBAN PROGRAMME, THE PRINCE'S FOUNDATION

## STREET, BLOCK, AND BUILDING:

### *Getting Neighborhoods Built*

*Red Lacquer Ballroom*

A detailed look at techniques for meeting modern market expectations and still moving garages off street fronts, getting big yard space out of small lots, putting different house types on a single street, and meeting other challenges in laying out new urbanist communities.

### *Moderator:*

**Jonathan Barnett**, PROFESSOR OF CITY AND REGIONAL PLANNING AND DIRECTOR OF THE URBAN DESIGN PROGRAM, UNIVERSITY OF PENNSYLVANIA, CNU BOARD MEMBER

### *Panelists:*

**R. John Anderson**, PRINCIPAL, NEW URBAN BUILDERS  
**John Ellis**, DIRECTOR OF URBAN DESIGN, SOLOMON E.T.C., A WRT COMPANY

## ARCHITECTURAL EDUCATION:

### *Turning Design Culture Right Side Up*

*Salons 1-4*

Participants will critique the studio culture, academic content, and teaching methodologies that prevail overtly, latently, or by default in schools of architecture, in light of contemporary trends and issues in architecture and urbanism. An architecture school dean, a design professional, and an architecture student leader will present their thoughts and observations and invite audience members to join the discussion.

### *Moderator:*

**Phyllis Bleiweis**, EXECUTIVE DIRECTOR, THE SEASIDE INSTITUTE AND THE SEASIDE PIENZA INSTITUTE

### *Panelists:*

**Stephanie Bothwell**, URBAN AND LANDSCAPE DESIGN, CNU BOARD MEMBER  
**Douglas Kelbaugh**, DEAN, TAUBMAN COLLEGE OF ARCHITECTURE AND URBAN PLANNING, UNIVERSITY OF MICHIGAN  
**Zachary Borders**, AIAS ILLINOIS, CNU BOARD MEMBER

---

## 2004 Charter Awards Luncheon

11:30 AM - 1:30 PM

*Grand/State Ballroom*

*Luncheon requires pre-registration and a separate fee*

Join our mid-day celebration and ceremony for the winners of CNU's 2004 Charter Awards. The program recognizes exemplary projects that advance New Urbanism through diverse land uses, innovative designs, and expert planning. There are winners at all scales of the Charter of the New Urbanism from building to region. Members of the distinguished awards jury will be present to fete the winners.

### *Jury Chair:*

**Ellen Dunham-Jones**, DIRECTOR, ARCHITECTURE PROGRAM, GEORGIA INSTITUTE OF TECHNOLOGY

*Charter Awards 2004 Jury Members:*

**Lee Bey**, DIRECTOR OF MEDIA AND GOVERNMENT AFFAIRS, SKIDMORE, OWINGS & MERRILL LLP; FORMER MAYORAL DEPUTY CHIEF OF STAFF FOR PLANNING AND DESIGN, CITY OF CHICAGO  
**Stephanie Bothwell**, URBAN AND LANDSCAPE DESIGN, CNU BOARD MEMBER

**Michael Dennis**, PRINCIPAL, MICHAEL DENNIS & ASSOCIATES, PROFESSOR, MASSACHUSETTS INSTITUTE OF TECHNOLOGY

**Philip Enquist**, URBAN DESIGN PARTNER, SKIDMORE, OWINGS & MERRILL, LLP

**Gary Hack**, PALEY PROFESSOR OF CITY & REGIONAL PLANNING AND DEAN OF GRADUATE SCHOOL OF FINE ARTS, UNIVERSITY OF PENNSYLVANIA

**David Rudlin**, DIRECTOR, URBAN AND ECONOMIC DEVELOPMENT GROUP, LTD.

---

## Five Concurrent Intensive Sessions

1:45 PM – 3:45 PM

### MAKING AND MARKETING MIXED-INCOME NEIGHBORHOODS

*Adams Ballroom*

Over the past several years, the federal HOPE VI program has been the principle source of funding for the development of mixed-income neighborhoods. But with Hope VI facing reductions and possible elimination, developers, planners, and designers must now address the challenges of creating and financing these communities. This session explores the critical interface between finance and design, including debt and equity structures; uses of subsidies and tax-advantaged finance; the realistic determination of market potential; and phasing that meets both financial and market objectives.

*Moderator:*

**Laurie Volk**, CO-MANAGING DIRECTOR, ZIMMERMAN/VOLK ASSOCIATES, INC.

*Panelists:*

**Andre Brumfield**, ASSOCIATE, SKIDMORE, OWINGS & MERRILL LLP

**Daniel Hernandez**, DEVELOPER/PROJECT MANAGER, JONATHAN ROSE COMPANIES

**Peter Siegel**, VICE PRESIDENT, LANDEX CORPORATION

**Barry Long**, MANAGING PRINCIPAL, URBAN DESIGN ASSOCIATES

### ARGUING MYTH AND FACT

*Salons 5 – 8*

To a libertarian, cars represent freedom, public transportation is a costly luxury, and planning threatens individual rights. To a new urbanist, transit is the hope of the urban future, traffic needs taming, and planning represents the only chance many cities have. Could there be points of agreement behind the rhetoric? Join experts from both sides of the ideological divide as they find out.

*Moderator:*

**Alan Ehrenhalt**, EXECUTIVE DIRECTOR, GOVERNING MAGAZINE

*Panelists:*

**Hank Dittmar**, PRESIDENT & CEO, RECONNECTING AMERICA, CNU BOARD MEMBER

**Randal O'Toole**, ECONOMIST, THOREAU INSTITUTE

**Robert Bruegmann**, PROFESSOR OF ART HISTORY, ARCHITECTURE AND URBAN PLANNING, UNIVERSITY OF ILLINOIS AT CHICAGO

**John Norquist**, PRESIDENT & CEO, CONGRESS FOR THE NEW URBANISM

### PATTERN BOOKS AND PRODUCTION BUILDERS

*Salons 1 – 4*

Since before the industrial revolution, most urbanism has been created with production building. London's terrace housing, New York's brownstones, Victorian neighborhoods, and the garden cities of the twenties were created by builders guided by pattern books which ensured quality design as well as harmony among the various buildings. Hear urbanists, architects, and developers present techniques for creating and using these tools today.

*Moderator:*

**Todd Zimmerman**, CO-MANAGING DIRECTOR, ZIMMERMAN/VOLK ASSOCIATES, INC., CNU BOARD MEMBER

*Panelists:*

**Stephen A. Mouzon**, DIRECTOR OF DESIGN, PLACEMAKERS

**Jackie Benson**, MARKETING CONSULTANT, TND MARKETING

**Ray Gindroz**, CHAIRMAN, URBAN DESIGN ASSOCIATES, CNU BOARD MEMBER

**Mike Brunetti**, LANDSCAPE ARCHITECT AND PLANNER, CELEBRATION ASSOCIATES INC.

**Robert Adam**, PRINCIPAL, ROBERT ADAM ARCHITECTS



## WORKING WITH THE MODERNIST LEGACY

*Red Lacquer Room*

In both Europe and North America, cities are reworking modernist buildings and spaces, sometimes to re-establish traditional urban space, sometimes to create new forms. Panelists will explore the promise of modifying and humanizing modernist environments and using modernist architectural language in the service of good urbanism.

*Moderator:*

**Edward Keegan**, PRINCIPAL, EDWARD KEEGAN ARCHITECT, CONTRIBUTING EDITOR, ARCHITECTURE MAGAZINE

*Panelists:*

**Larry Beasley**, CO-DIRECTOR OF PLANNING, CITY OF VANCOUVER

**Ann Beha**, PRESIDENT, ANN BEHA ARCHITECTS, INC.

**Jean-Francois LeJeune**, ASSOCIATE PROFESSOR, UNIVERSITY OF MIAMI, SCHOOL OF ARCHITECTURE

**Peter Landon**, PRINCIPAL, LANDON BONE BAKER LTD.

## FROM URBAN FREEWAY TO URBAN FABRIC

*Monroe Ballroom*

Urbanists are seizing extraordinary opportunities for rebuilding city life by tearing down, covering, and moving freeways. In this session, design professionals with freeway replacement experience in Portland, Toronto, Milwaukee, Boston, and Washington will explore methods of re-establishing urban fabric, coping with traffic, and connecting the city's long-separated parts.

*Moderator:*

**Paul F. Morris**, SENIOR PROFESSIONAL ASSOCIATE, PARSONS BRINCKERHOFF INC.

*Panelists:*

**Karen Alschuler**, PRINCIPAL, DIRECTOR OF PLANNING, SIMON MARTIN-VEGUE WINKELSTEIN MORIS

**Peter Park**, MANAGER, COMMUNITY PLANNING AND DEVELOPMENT, CITY OF DENVER

**Joe Berridge**, PARTNER, URBAN STRATEGIES INC.

3:45 PM – 4:00 PM

## MID-AFTERNOON BREAK

*Adams and Monroe Ballroom Foyers*

Refreshments provided

---

## Plenary Session

4:00 PM – 5:00 PM

## ELEVATED PERSPECTIVES

*Grand/State Ballroom*

Alex MacLean, aerial photographer extraordinaire, offers provocative images and commentary on historic, contemporary, and evolving conditions from the urban center to the rural edge.

**Alex MacLean**, AMERICAN ACADEMY IN ROME

*Introduction by:*

**Jeff Speck**, DIRECTOR OF DESIGN, NATIONAL ENDOWMENT FOR THE ARTS

---

7:30 PM – 11:30 PM

## SATURDAY NIGHT PARTY:

*Dinner, Theatre, and Dancing*

Join us on the Burnham Plan-inspired Navy Pier for an evening featuring dinner, fireworks, and a special performance from the Second City comedy troupe. This legendary improv group has given us the comedic giants John Belushi, Dan Ackroyd, Bill Murray, and Gilda Radner. You'll discover what comedy's next generation can do with three minutes and a couple of your ideas! Dancing will follow. *Pre-registration and ticket required. No transportation provided. See registration desk for options.*



# SUNDAY

## SUNDAY | June 27

8:00 AM – 10:00 AM

### CONGRESS REGISTRATION

Sixth Floor Lobby, Palmer House Hilton

8:00 AM – 9:00 AM

### CONTINENTAL BREAKFAST

Adams & Monroe Grand Ballroom Foyers

## Five Concurrent Sessions

9:00 AM – 10:30 AM

### ANATOMY OF NEW URBANIST CODES

Grand Ballroom

From design codes for individual projects to municipally administered citywide zoning, new urbanist coding has evolved. This session looks inside the codes to study the provisions that public agencies are using to implement New Urbanism. Learn how different agencies regulate mixed use, build-to lines, and other new urban essentials.

*Moderator:*

**Rick Bernhardt**, EXECUTIVE DIRECTOR, METROPOLITAN PLANNING DEPARTMENT, NASHVILLE DAVIDSON COUNTY

*Panelists:*

**Paul Crawford**, PRINCIPAL, CRAWFORD MULTARI & CLARK ASSOC.

**Beverley Dockeray-Ojo**, DIRECTOR OF THE BUREAU OF PLANNING, CITY OF ATLANTA

**Craig Lewis**, PRINCIPAL/DIRECTOR OF TOWN PLANNING, THE LAWRENCE GROUP, TOWN PLANNERS AND ARCHITECTS

### THE SUSTAINABLE BLOCK\*

Monroe Ballroom

Increasingly, urbanists are complementing the qualities of traditional towns and cities with high performance strategies for sustainability. At the scale of the block these include solar orientation and stormwater filtration. This session will explore the tradeoffs and connections between ideal urban form and environmental performance, showcasing BedZed, a zero-energy, block-scale project from England.

*Moderator:*

**Elizabeth Moule**, PRINCIPAL, MOULE & POLYZOIDES, ARCHITECTS AND URBANISTS, CNU BOARD MEMBER

*Panelists:*

**Judith Corbett**, EXECUTIVE DIRECTOR, LOCAL GOVERNMENT COMMISSION, CNU BOARD MEMBER

**Bill Dunster**, BILL DUNSTER ARCHITECTS

### RADICAL MANUALS:

#### *Street Design Guidance from the Leading Edge*

Adams Ballroom

The vast majority of street design engineers rely on state and national design guides that often prevent the creation of walkable streets. This session features three innovators working to change these influential manuals — from both within and outside the engineering establishment.

*Moderator:*

**Marcy McInelly**, PRESIDENT, URBSWORKS INC.

*Panelists:*

**Andrés Duany**, PRINCIPAL, DUANY PLATER-ZYBERK & CO., CNU BOARD MEMBER

**Stephen Marshall**, SENIOR RESEARCH FELLOW, BARTLETT SCHOOL OF PLANNING, UNIVERSITY COLLEGE LONDON

**John LaPlante**, CHIEF TRAFFIC ENGINEER, TY LIN INTERNATIONAL

### DTOD: DESIGN OF TRANSIT-ORIENTED DEVELOPMENT

Red Lacquer Room

Transit-Oriented Development is happening at record levels, but there are still large gaps in understanding how to design a successful TOD. This panel will address the keys to successful design in making the connection between transit, development, and the surrounding community.

*Moderator:*

**G.B. Arrington**, SENIOR PROFESSIONAL ASSOCIATE, PB PLACEMAKING

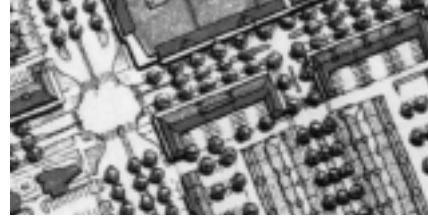
*Panelists:*

**Tim Van Meter**, PRINCIPAL, VAN METER WILLIAMS POLLACK

**Michael Bohn**, SENIOR ASSOCIATE, MOULE & POLYZOIDES, ARCHITECTS AND URBANISTS

**Charles Witherington-Perkins**, DIRECTOR OF PLANNING AND COMMUNITY-DEVELOPMENT, ARLINGTON HEIGHTS, IL

\*Supported by a grant from the Illinois Clean Energy Community Foundation



## SUNDAY CONTINUED

### META-PHYSICAL PLANNING

Salons 1-4

Admired new urbanists recognize that New Urbanism is at the service of something greater than materialism. Namely, the creation of physical places that support neighborhood and community. In reprising a topic that provoked a passionate response at past Congresses, this session will invite the audience to join the discussion on fulfilling the human need for places that are both comforting to the body and worthy of the spirit.

*Moderator:*

**John Massengale**, VERITAS & VENUSTAS

*Panelists:*

**Philip Bess**, PROFESSOR OF ARCHITECTURE, UNIVERSITY OF NOTRE DAME, PRINCIPAL, THURSDAY ASSOCIATES

**Daniel Slone**, ATTORNEY, MCGUIRE WOODS BATTLE & BOOTHE LLP

---

10:30 AM – 10:45 AM

### MID-MORNING BREAK

Grand & State Ballroom Foyers

Refreshments provided

---

## Plenary Session

10:45 AM – 1:00 PM

### THE NEW CITY BEAUTIFUL

Grand Ballroom

Drawing on ideas from earlier sessions on the traditional, modernist, and sustainable city, CNU XII's closing forum will explore the strengths, weaknesses, and current relevance of the enigmatic City Beautiful movement. There are obvious contrasts, but the similarities are also real: New Urbanists hope to have as profound an impact on blocks, streets, buildings, and civic life as Burnham and Progressive Era civic improvers hoped to have on their settings. A century later, how can we sum up the parallels, contrasts, and lessons learned?

*Moderator:*

**Emily Talen**, ASSOCIATE PROFESSOR, UNIVERSITY OF ILLINOIS, URBANA-CHAMPAIGN

*Panelists:*

**Daniel Solomon**, PRINCIPAL, SOLOMON E.T.C., A WRT COMPANY, CNU BOARD MEMBER

**Alex Krieger**, CHAIR OF URBAN PLANNING & DESIGN/ PROFESSOR OF PRACTICE IN URBAN DESIGN, HARVARD DESIGN SCHOOL, HARVARD UNIVERSITY

**Andrés Duany**, PRINCIPAL, DUANY PLATER-ZYBERK & CO., CNU BOARD MEMBER

**Stefanos Polyzoides**, PRINCIPAL, MOULE & POLYZOIDES, ARCHITECTS AND URBANISTS, CNU BOARD MEMBER

### OPEN MIKE

*Moderator:*

**Hank Dittmar**, PRESIDENT, RECONNECTING AMERICA, CNU BOARD MEMBER

1:00 PM

### CONGRESS ADJOURNS

---

## Sunday Afternoon Tours

1:00 PM – 7:30 PM

**N:** Prairie Crossing

2:00 PM – 3:30 PM

**O:** River Cruise

2:30 PM – 5:00 PM

**P:** Legacy of the Plan of Chicago

3:30 PM – 5:30 PM

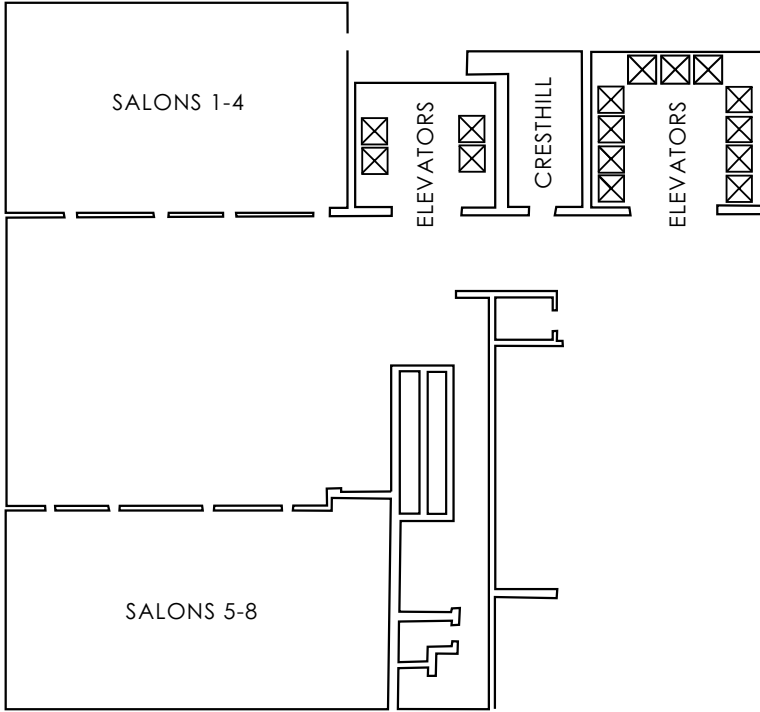
**Q:** Redevelopment of Downtown



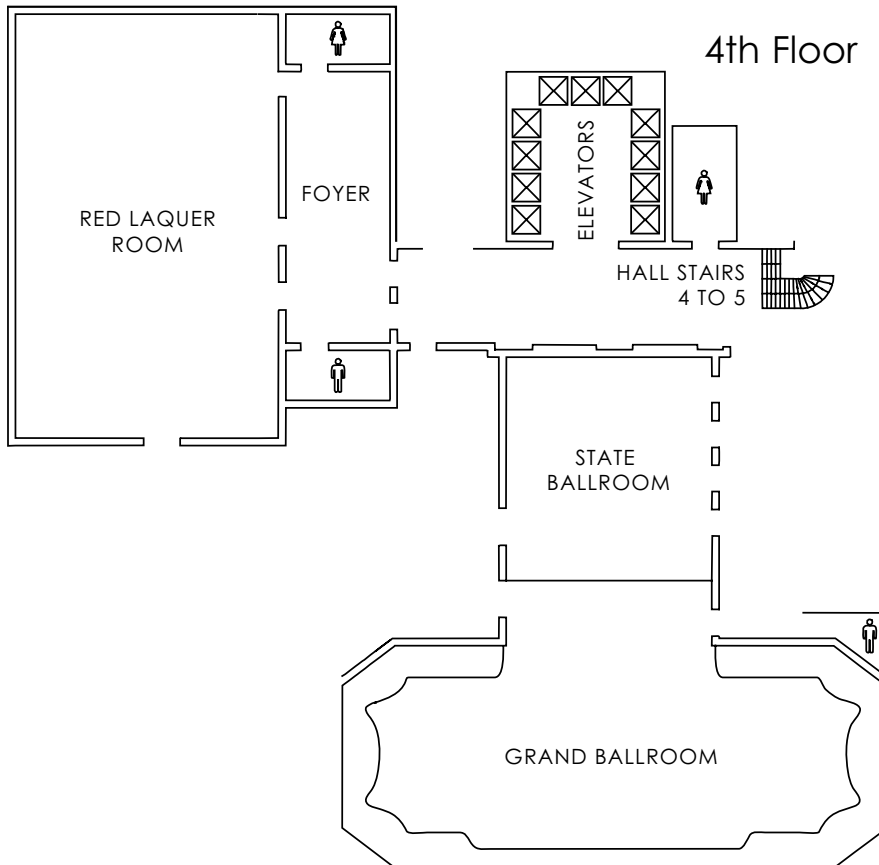
<b>THURSDAY</b> JUNE 24	<b>9:00 AM – 12:00 PM</b>	New Urbanism 101	New Urbanism 202 Real Streets: Designing, Getting, and Keeping Them	New Urbanism 202 Financing the New Urbanism	New Urbanism 202 Transit-Oriented Development: Making it Work in the Marketplace	
	<b>1:00 PM – 4:00 PM</b>		New Urbanism 202 Mixed-use Town Centers: Tenant Selection, Programming, Planning, and Design	New Urbanism 202 Top Techniques for Successful Charrettes	New Urbanism 202 Developing the New Urbanism	
<b>FRIDAY</b> JUNE 25	<b>4:15 PM – 5:45 PM</b>	Amending the Charter of the New Urbanism				
	<b>7:30 PM – 8:30 PM</b>		Opening Reception			
	<b>8:30 PM – 10:00 PM</b>	Opening Session: Seeds of Prosperity				
	<b>8:00 AM – 9:30 AM</b>	The Traditional City				
	<b>9:45 AM – 11:15 AM</b>	Certifying New Urbanism	Working with the Traditional City	The High-Intensity Block	The Evolution of Urban Design	New Urbanism on the Prairie
<b>SATURDAY</b> JUNE 26	<b>11:30 AM – 1:30 PM</b>	Downtown/New Town Task Forces	Environment Task Force	Planners Task Force	Design Task Force	Education Task Force
	<b>1:45 PM – 3:15 PM</b>	The Modernist City				
	<b>3:30 PM – 5:00 PM</b>	Big Box on a Small Block	Block Types: Learning from Precedent	The Art of Stormwater	Tutorials on Type	The Fate of the Arterial
	<b>5:30 PM – 7:00 PM</b>		Friday Evening Salons		Florida CNU Chapter Super Salon	
	<b>8:00 AM – 9:30 AM</b>	The Sustainable City				
<b>SUNDAY</b> JUNE 27	<b>9:45 AM – 11:15 AM</b>		Street, Block, and Building: Getting Neighborhoods Built	Techniques for Sustainable Urbanism	The Coming Demand	Architectural Education: Turning Design Culture Right Side Up
	<b>11:30 AM – 1:30 PM</b>	2004 Charter Awards Luncheon				
	<b>1:45 PM – 3:45 PM</b>		Working with the Modernist Legacy	Making and Marketing Mixed-Income Neighborhoods	From Urban Freeway to Urban Fabric	Pattern Books and Production Builders
	<b>4:00 PM – 5:00 PM</b>	Elevated Perspectives				
	<b>7:30 PM – 11:30 PM</b>	Offsite: Saturday Night Party at Navy Pier				
<b>SUNDAY</b> JUNE 27	<b>9:00 AM – 10:30 AM</b>	Anatomy of New Urbanist Codes	Design of Transit-Oriented Development	Radical Manuals: Street Design Guidance from the Leading Edge	The Sustainable Block	Meta-Physical Planning
	<b>10:45 AM – 1:00 PM</b>	The New City Beautiful Open Mike				

# PALMER HOUSE HILTON MAPS

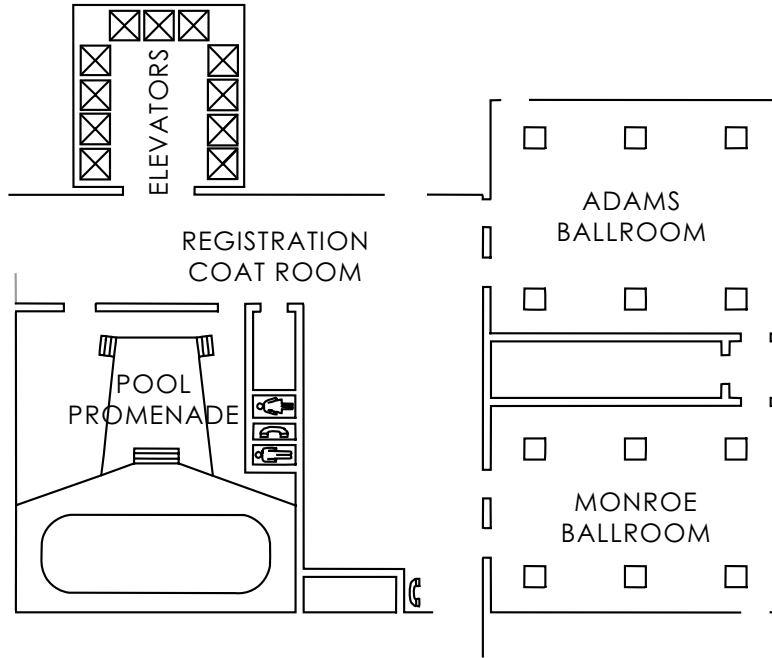
## 3rd Floor



## 4th Floor



# 6th Floor





# CHARTER OF THE

THE CONGRESS FOR THE NEW URBANISM views disinvestment in central cities, the spread of placeless sprawl, increasing separation by race and income, environmental deterioration, loss of agricultural lands and wilderness, and the erosion of society's built heritage as one interrelated community-building challenge.

WE STAND for the restoration of existing urban centers and towns within coherent metropolitan regions, the reconfiguration of sprawling suburbs into communities of real neighborhoods and diverse districts, the conservation of natural environments, and the preservation of our built legacy.

WE RECOGNIZE that physical solutions by themselves will not solve social and economic problems, but neither can economic vitality, community stability, and environmental health be sustained without a coherent and supportive physical framework.

WE ADVOCATE the restructuring of public policy and development practices to support the following principles: neighborhoods should be diverse in use and population; communities should be designed for the pedestrian and transit as well as the car; cities and towns should be shaped by physically defined and universally accessible public spaces and community institutions; urban places should be framed by architecture and landscape design that celebrate local history, climate, ecology, and building practice.

WE REPRESENT a broad-based citizenry, composed of public and private sector leaders, community activists, and multidisciplinary professionals. We are committed to reestablishing the relationship between the art of building and the making of community, through citizen-based participatory planning and design.

WE DEDICATE ourselves to reclaiming our homes, blocks, streets, parks, neighborhoods, districts, towns, cities, regions, and environment.

WE ASSERT THE FOLLOWING PRINCIPLES to guide public policy, development practice, urban planning, and design:

## REGION: METROPOLIS, CITY, AND TOWN

### ONE

The metropolitan region is a fundamental economic unit of the contemporary world. Governmental cooperation, public policy, physical planning, and economic strategies must reflect this new reality.

### TWO

Metropolitan regions are finite places with geographic boundaries derived from topography, watersheds, coastlines, farmlands, regional parks, and river basins. The metropolis is made of multiple centers that are cities, towns, and villages, each with its own identifiable center and edges.

### THREE

The metropolis has a necessary and fragile relationship to its agrarian hinterland and natural landscapes. The relationship is environmental, economic, and cultural. Farmland and nature are as important to the metropolis as the garden is to the house.

### FOUR

Development patterns should not blur or eradicate the edges of the metropolis. Infill development within existing areas conserves environmental resources, economic investment, and social fabric, while reclaiming marginal and abandoned areas. Metropolitan regions should develop strategies to encourage such infill development over peripheral expansion.

### FIVE

Where appropriate, new development contiguous to urban boundaries should be organized as neighborhoods and districts, and be integrated with the existing urban pattern. Noncontiguous development should be organized as towns and villages with their own urban edges, and planned for a jobs/housing balance, not as bedroom suburbs.

### SIX

The development and redevelopment of towns and cities should respect historical patterns, precedents, and boundaries.



# NEW URBANISM

## SEVEN

Cities and towns should bring into proximity a broad spectrum of public and private uses to support a regional economy that benefits people of all incomes. Affordable housing should be distributed throughout the region to match job opportunities and to avoid concentrations of poverty.

## EIGHT

The physical organization of the region should be supported by a framework of transportation alternatives. Transit, pedestrian, and bicycle systems should maximize access and mobility throughout the region while reducing dependence on the automobile.

## NINE

Revenues and resources can be shared more cooperatively among the municipalities and centers within regions to avoid destructive competition for tax base and to promote rational coordination of transportation, recreation, public services, housing, and community institutions.

## NEIGHBORHOOD, DISTRICT, AND CORRIDOR

### TEN

The neighborhood, the district, and the corridor are the essential elements of development and redevelopment in the metropolis. They form identifiable areas that encourage citizens to take responsibility for their maintenance and evolution.

### ELEVEN

Neighborhoods should be compact, pedestrian-friendly, and mixed-use. Districts generally emphasize a special single use, and should follow the principles of neighborhood design when possible. Corridors are regional connectors of neighborhoods and districts; they range from boulevards and rail lines to rivers and parkways.

### TWELVE

Many activities of daily living should occur within walking distance, allowing independence to those who do not drive, especially the elderly and the young. Interconnected networks of streets should be designed to encourage walking, reduce the number and length of automobile trips, and conserve energy.

## THIRTEEN

Within neighborhoods, a broad range of housing types and price levels can bring people of diverse ages, races, and incomes into daily interaction, strengthening the personal and civic bonds essential to an authentic community.

## FOURTEEN

Transit corridors, when properly planned and coordinated, can help organize metropolitan structure and revitalize urban centers. In contrast, highway corridors should not displace investment from existing centers.

## FIFTEEN

Appropriate building densities and land uses should be within walking distance of transit stops, permitting public transit to become a viable alternative to the automobile.

## SIXTEEN

Concentrations of civic, institutional, and commercial activity should be embedded in neighborhoods and districts, not isolated in remote, single-use complexes. Schools should be sized and located to enable children to walk or bicycle to them.

## SEVENTEEN

The economic health and harmonious evolution of neighborhoods, districts, and corridors can be improved through graphic urban design codes that serve as predictable guides for change.

## EIGHTEEN

A range of parks, from tot lots and village greens to ballfields and community gardens, should be distributed within neighborhoods. Conservation areas and open lands should be used to define and connect different neighborhoods and districts.

## BLOCK, STREET, AND BUILDING

### NINETEEN

A primary task of all urban architecture and landscape design is the physical definition of streets and public spaces as places of shared use.

### TWENTY

Individual architectural projects should be seamlessly linked to their surroundings. This issue transcends style.

## TWENTY-ONE

The revitalization of urban places depends on safety and security. The design of streets and buildings should reinforce safe environments, but not at the expense of accessibility and openness.

## TWENTY-TWO

In the contemporary metropolis, development must adequately accommodate automobiles. It should do so in ways that respect the pedestrian and the form of public space.

## TWENTY-THREE

Streets and squares should be safe, comfortable, and interesting to the pedestrian. Properly configured, they encourage walking and enable neighbors to know each other and protect their communities.

## TWENTY-FOUR

Architecture and landscape design should grow from local climate, topography, history, and building practice.

## TWENTY-FIVE

Civic buildings and public gathering places require important sites to reinforce community identity and the culture of democracy. They deserve distinctive form, because their role is different from that of other buildings and places that constitute the fabric of the city.

## TWENTY-SIX

All buildings should provide their inhabitants with a clear sense of location, weather, and time. Natural methods of heating and cooling can be more resource-efficient than mechanical systems.

## TWENTY-SEVEN

Preservation and renewal of historic buildings, districts, and landscapes affirm the continuity and evolution of urban society.

CONGRESS  
FOR THE  
NEW  
URBANISM

THE MARQUETTE BUILDING  
140 S. DEARBORN STREET  
SUITE 310  
CHICAGO, ILLINOIS 60603

WWW.CNU.ORG

DESIGN Wolfe Design

P A S A D E N A C A

# CNUXIII

JUNE 9-12, 2005 Pasadena Civic Auditorium

